

For Research Use Only

SAE1 Recombinant antibody

Catalog Number: 84516-6-RR



Basic Information

Catalog Number: 84516-6-RR	GenBank Accession Number: BC000344	Purification Method: Protein A purification
Size: 100ul , Concentration: 1000 µg/ml by Nanodrop;	GeneID (NCBI): 10055	CloneNo.: 241923F12
Source: Rabbit	UNIPROT ID: Q9UBE0	Recommended Dilutions: IHC 1:300-1:1200 IF/ICC 1:250-1:1000
Isotype: IgG	Full Name: SUMO1 activating enzyme subunit 1	
Immunogen Catalog Number: AG0275	Calculated MW: 38 kDa	

Applications

Tested Applications: IHC, IF/ICC, FC (Intra), ELISA	Positive Controls:
Species Specificity: human	IHC : human colon cancer tissue, IF/ICC : MCF-7 cells, HeLa cells

Note-IHC: suggested antigen retrieval with **TE buffer pH 9.0; (*) Alternatively, antigen retrieval may be performed with citrate buffer pH 6.0**

Background Information

SAE1(SUMO-activating enzyme subunit 1) is also named as AOS1, SUA1, UBLE1A and belongs to the ubiquitin-activating E1 family. SAE1 has a calculated molecular mass of 38 kD. SAE1 and UBA2 form a heterodimer that functions as a SUMO-activating enzyme for the sumoylation of proteins(PMID:9920803). Western blot analysis of synchronized HeLa cells detects increased AOS1 expression as cells progressed through S phase, followed by a substantial decrease in G2 phase. Immunofluorescence analysis shows AOS1 and UBA2 distributed throughout nuclei, but they are excluded from nucleoli.(PMID:11481243).

Storage

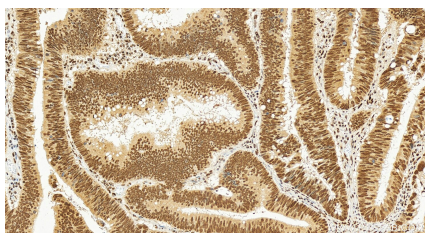
Storage:
Store at -20°C. Stable for one year after shipment.
Storage Buffer:
PBS with 0.02% sodium azide and 50% glycerol
Aliquoting is unnecessary for -20°C storage

***** 20ul sizes contain 0.1% BSA**

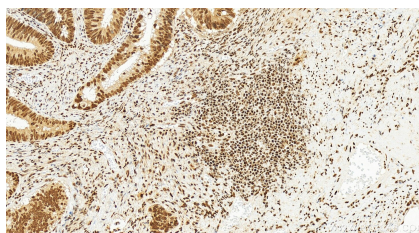
For technical support and original validation data for this product please contact:
T: 1 (888) 4PTGLAB (1-888-478-4522) (toll free in USA), or 1(312) 455-8498 (outside USA)
E: proteintech@ptglab.com
W: ptglab.com

This product is exclusively available under Proteintech Group brand and is not available to purchase from any other manufacturer.

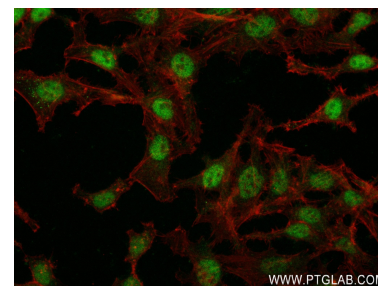
Selected Validation Data



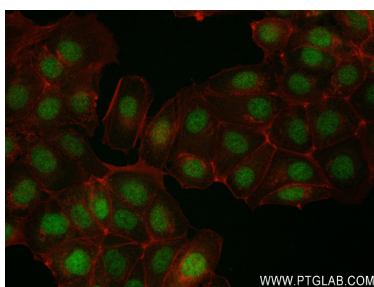
Immunohistochemical analysis of paraffin-embedded human colon cancer tissue slide using 84516-6-RR (SAE1 antibody) at dilution of 1:600 (under 20x lens). Heat mediated antigen retrieval with Tris-EDTA buffer (pH 9.0).



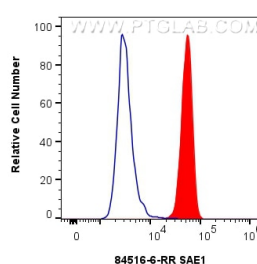
Immunohistochemical analysis of paraffin-embedded human colon cancer tissue slide using 84516-6-RR (SAE1 antibody) at dilution of 1:600 (under 20x lens). Heat mediated antigen retrieval with Tris-EDTA buffer (pH 9.0).



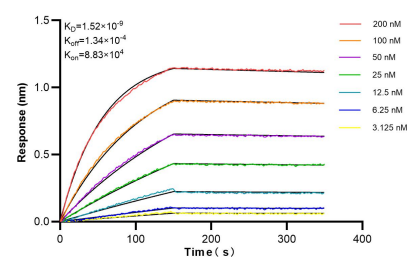
Immunofluorescent analysis of (4% PFA) fixed HeLa cells using SAE1 antibody (84516-6-RR, Clone: 241923F12) at dilution of 1:500 and CoraLite®488-Conjugated Goat Anti-Rabbit IgG(H+L) (SA00013-2), CL594-Phalloidin (red).



Immunofluorescent analysis of (4% PFA) fixed MCF-7 cells using SAE1 antibody (84516-6-RR, Clone: 241923F12) at dilution of 1:500 and CoraLite®488-Conjugated Goat Anti-Rabbit IgG(H+L) (SA00013-2), CL594-Phalloidin (red).



1×10^6 A549 cells were intracellularly stained with 0.25 μ g SAE1 Recombinant antibody (84516-6-RR, Clone: 241923F12) and CoraLite®488-Conjugated Goat Anti-Rabbit IgG(H+L) (SA00013-2) (red), or 0.25 μ g Rabbit IgG Isotype Control RecAb (98136-1-RR, Clone: 240953C9) (blue). Cells were fixed and permeabilized with Transcription Factor Staining Buffer Kit (PF00011).



Bilayer interferometry (BLI) kinetic assays of 84516-6-RR against Human SAE1 were performed. The affinity constant is 1.52 nM.