

For Research Use Only

Mouse ALCAM Recombinant antibody, PBS Only (Capture)

Catalog Number: 84528-1-PBS



Basic Information

Catalog Number: 84528-1-PBS	GenBank Accession Number: NM_009655.3	Purification Method: Protein A purification
Size: 100ug , Concentration: 1 mg/ml by Nanodrop;	GeneID (NCBI): 11658	CloneNo.: 241945A4
Source: Rabbit	UNIPROT ID: Q61490	
Isotype: IgG	Full Name: activated leukocyte cell adhesion molecule	
Immunogen Catalog Number: EG1524	Calculated MW: 65 kDa	
	Observed MW: 90-100 kDa	

Applications

Tested Applications:
WB, IHC, Cytometric bead array, Sandwich ELISA, Indirect ELISA, Sample test

Species Specificity:
mouse

Product Information

84528-1-PBS targets ALCAM as part of a matched antibody pair.

MP01379-1: 84528-1-PBS capture and 84528-3-PBS detection (validated in Cytometric bead array, Sandwich ELISA)

Unconjugated rabbit recombinant monoclonal antibody in PBS only (BSA and azide free) storage buffer at a concentration of 1 mg/mL, ready for conjugation. Created using Proteintech's proprietary in-house recombinant technology. Recombinant production enables unrivalled batch-to-batch consistency, easy scale-up, and future security of supply.

This conjugation ready format makes antibodies ideal for use in many applications including: ELISAs, multiplex assays requiring matched pairs, mass cytometry, and multiplex imaging applications. Antibody use should be optimized by the end user for each application and assay.

Background Information

Activated leukocyte cell adhesion molecule (ALCAM, also known as CD166) is a cell adhesion molecule that belongs to the immunoglobulin superfamily. It is involved in cell-cell adhesion through homophilic and heterophilic (to CD6) interactions. ALCAM is widely expressed in a variety of normal tissues. Altered ALCAM expression has been associated with the differentiation state and progression in some neoplasms including melanoma, prostate, colorectal, and breast cancers (PMID: 20461761; 18172759).

Storage

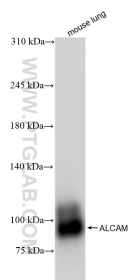
Storage:
Store at -80°C.

Storage Buffer:
PBS only, pH7.3

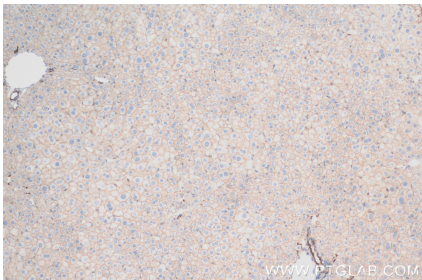
For technical support and original validation data for this product please contact:
T: 1 (888) 4PTGLAB (1-888-478-4522) (toll free in USA), or 1(312) 455-8498 (outside USA)
E: proteintech@ptglab.com
W: ptglab.com

This product is exclusively available under Proteintech Group brand and is not available to purchase from any other manufacturer.

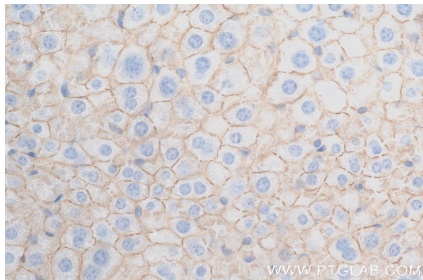
Selected Validation Data



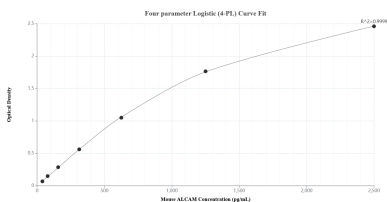
mouse lung tissue was subjected to SDS PAGE followed by western blot with 84528-1-RR (ALCAM antibody) at dilution of 1:5000 incubated at room temperature for 1.5 hours. This data was developed using the same antibody clone with 84528-1-PBS in a different storage buffer formulation.



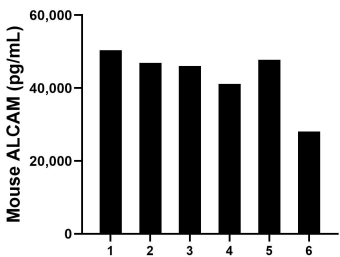
Immunohistochemical analysis of paraffin-embedded mouse liver tissue slide using 84528-1-RR (ALCAM antibody) at dilution of 1:500 (under 10x lens). Heat mediated antigen retrieval with Tris-EDTA buffer (pH 9.0). This data was developed using the same antibody clone with 84528-1-PBS in a different storage buffer formulation.



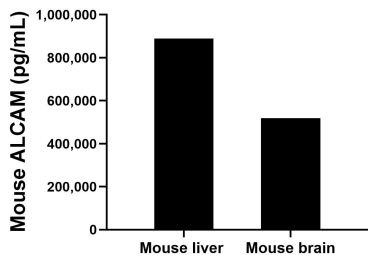
Immunohistochemical analysis of paraffin-embedded mouse liver tissue slide using 84528-1-RR (ALCAM antibody) at dilution of 1:500 (under 40x lens). Heat mediated antigen retrieval with Tris-EDTA buffer (pH 9.0). This data was developed using the same antibody clone with 84528-1-PBS in a different storage buffer formulation.



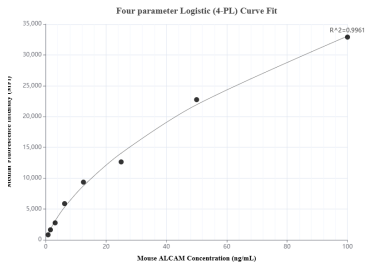
Sandwich ELISA standard curve of MP01379-1, Mouse ALCAM Recombinant Matched Antibody Pair - PBS only. 84528-1-PBS was coated to a plate as the capture antibody and incubated with serial dilutions of standard Eg1524. 84528-3-PBS was HRP conjugated as the detection antibody. Range: 39.1-2500 pg/mL



Serum of six mice was measured. The ALCAM concentration of detected samples was determined to be 43,380.5 pg/mL with a range of 28,091.3-50,380.4 pg/mL



The mean ALCAM concentration was determined to be 888,916.9 pg/mL in mouse liver tissue extract based on a 3.7 mg/mL extract load and 518,424.5 pg/mL in mouse brain tissue extract based on a 2.0 mg/mL extract load.



Cytometric bead array standard curve of MP01379-1, MOUSE ALCAM Recombinant Matched Antibody Pair, PBS Only. Capture antibody: 84528-1-PBS. Detection antibody: 84528-3-PBS. Standard: Eg1524. Range: 0.781-100 ng/mL