

For Research Use Only

Mouse ALCAM Recombinant antibody, PBS Only (Detector)

Catalog Number: 84528-3-PBS



Basic Information

Catalog Number: 84528-3-PBS	GenBank Accession Number: NM_009655.3	Purification Method: Protein A purification
Size: 100ug, Concentration: 1 mg/ml by Nanodrop;	GeneID (NCBI): 11658	CloneNo.: 241945C11
Source: Rabbit	UNIPROT ID: Q61490	
Isotype: IgG	Full Name: activated leukocyte cell adhesion molecule	
Immunogen Catalog Number: EG1524	Calculated MW: 65 kDa	

Applications

Tested Applications:
Cytometric bead array, Sandwich ELISA, Indirect ELISA, Sample test

Species Specificity:
mouse

Product Information

84528-3-PBS targets ALCAM as part of a matched antibody pair:

MP01379-1: 84528-1-PBS capture and 84528-3-PBS detection (validated in Cytometric bead array, Sandwich ELISA)

MP01379-2: 84528-2-PBS capture and 84528-3-PBS detection (validated in Cytometric bead array)

Unconjugated rabbit recombinant monoclonal antibody in PBS only (BSA and azide free) storage buffer at a concentration of 1 mg/mL, ready for conjugation. Created using Proteintech's proprietary in-house recombinant technology. Recombinant production enables unrivalled batch-to-batch consistency, easy scale-up, and future security of supply.

This conjugation ready format makes antibodies ideal for use in many applications including: ELISAs, multiplex assays requiring matched pairs, mass cytometry, and multiplex imaging applications. Antibody use should be optimized by the end user for each application and assay.

Storage

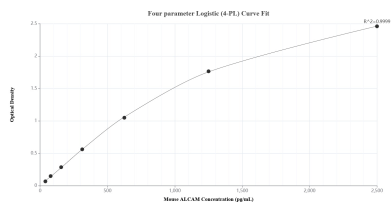
Storage:
Store at -80°C.

Storage Buffer:
PBS only, pH7.3

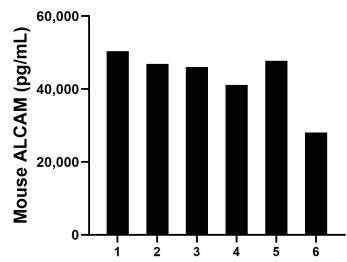
For technical support and original validation data for this product please contact:
T: 1 (888) 4PTGLAB (1-888-478-4522) (toll free in USA), or 1(312) 455-8498 (outside USA)
E: proteintech@ptglab.com
W: ptglab.com

This product is exclusively available under Proteintech Group brand and is not available to purchase from any other manufacturer.

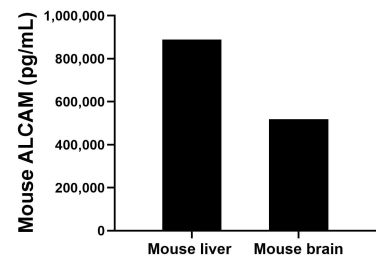
Selected Validation Data



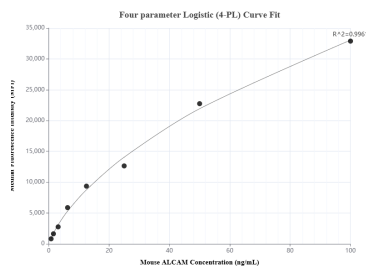
Sandwich ELISA standard curve of MP01379-1, Mouse ALCAM Recombinant Matched Antibody Pair - PBS only. 84528-1-PBS was coated to a plate as the capture antibody and incubated with serial dilutions of standard Eg1524. 84528-3-PBS was HRP conjugated as the detection antibody. Range: 39.1-2500 pg/mL.



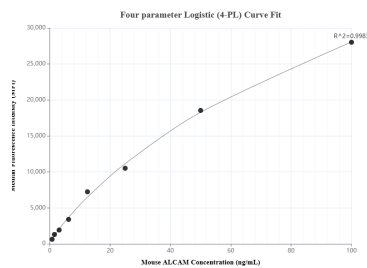
Serum of six mice was measured. The ALCAM concentration of detected samples was determined to be 43,380.5 pg/mL with a range of 28,091.3-50,380.4 pg/mL.



The mean ALCAM concentration was determined to be 888,916.9 pg/mL in mouse liver tissue extract based on a 3.7 mg/mL extract load and 518,424.5 pg/mL in mouse brain tissue extract based on a 2.0 mg/mL extract load.



Cytometric bead array standard curve of MP01379-1, MOUSE ALCAM Recombinant Matched Antibody Pair, PBS Only. Capture antibody: 84528-1-PBS. Detection antibody: 84528-3-PBS. Standard: Eg1524. Range: 0.781-100 ng/mL.



Cytometric bead array standard curve of MP01379-2, MOUSE ALCAM Recombinant Matched Antibody Pair, PBS Only. Capture antibody: 84528-2-PBS. Detection antibody: 84528-3-PBS. Standard: Eg1524. Range: 0.781-100 ng/mL.