

For Research Use Only

CDC20 Recombinant antibody

Catalog Number: 84531-5-RR



Basic Information

Catalog Number:

84531-5-RR

Size:

100ul

Source:

Rabbit

Isotype:

IgG

Immunogen Catalog Number:

AG0295

GenBank Accession Number:

BC001088

GeneID (NCBI):

991

UNIPROT ID:

Q12834

Full Name:

cell division cycle 20 homolog (S. cerevisiae)

Calculated MW:

55 kDa

Observed MW:

55 kDa

Purification Method:

Protein A purification

CloneNo.:

241925E12

Recommended Dilutions:

WB 1:5000-1:50000

Applications

Tested Applications:

WB, ELISA

Species Specificity:

human

Positive Controls:

WB : HeLa cells, HEK-293 cells, Jurkat cells, HepG2 cells, PC-3 cells

Background Information

Cdc20 (Cell-division cycle protein 20 homologue) is also named as p55CDC and belongs to the WD repeat CDC20/Fizzy family. Cdc20 has important functions in chromosome segregation and mitotic exit. Cdc20 is the target of the spindle assembly checkpoint (SAC) and a key cofactor of the anaphase-promoting complex or cyclosome (APC/CCDC20) E3 ubiquitin ligase, thus regulating APC/C ubiquitin activity on specific substrates for their subsequent degradation by the proteasome (PMID: 28202332). The 55-kDa band corresponded to the size of Cdc20 (PMID: 22566641).

Storage

Storage:

Store at -20°C. Stable for one year after shipment.

Storage Buffer:

PBS with 0.02% sodium azide and 50% glycerol pH 7.3.

Aliquoting is unnecessary for -20°C storage

*** 20ul sizes contain 0.1% BSA

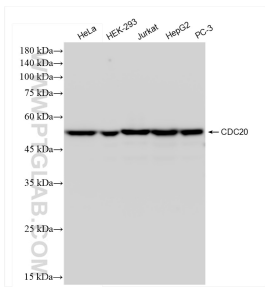
For technical support and original validation data for this product please contact:

T: 1 (888) 4PTGLAB (1-888-478-4522) (toll free in USA), or 1(312) 455-8498 (outside USA)

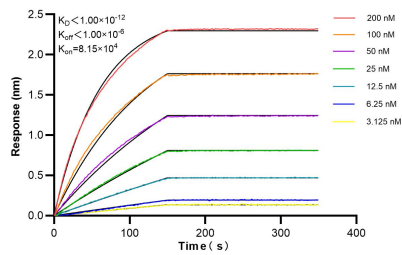
E: proteintech@ptglab.com
W: ptglab.com

This product is exclusively available under Proteintech Group brand and is not available to purchase from any other manufacturer.

Selected Validation Data



Various lysates were subjected to SDS PAGE followed by western blot with 84531-5-RR (CDC20 antibody) at dilution of 1:10000 incubated at room temperature for 1.5 hours.



Biolayer interferometry (BLI) kinetic assays of 84531-5-RR against Human CDC20 were performed. The affinity constant is below 1 pM.