

For Research Use Only

# IL17RA Recombinant antibody, PBS Only (Detector)

Catalog Number: 84535-2-PBS



## Basic Information

<b>Catalog Number:</b> 84535-2-PBS	<b>GenBank Accession Number:</b> BC011624	<b>Purification Method:</b> Protein A purification
<b>Size:</b> 100ug , Concentration: 1 mg/ml by Nanodrop;	<b>GeneID (NCBI):</b> 23765	<b>CloneNo.:</b> 241891E11
<b>Source:</b> Rabbit	<b>UNIPROT ID:</b> Q96F46	
<b>Isotype:</b> IgG	<b>Full Name:</b> interleukin 17 receptor A	
	<b>Calculated MW:</b> 866 aa, 96 kDa	
	<b>Observed MW:</b> 100-130 kDa	

## Applications

**Tested Applications:**  
WB, Cytometric bead array, Sandwich ELISA, Indirect ELISA, Sample test

**Species Specificity:**  
human

## Product Information

84535-2-PBS targets IL17RA as part of a matched antibody pair:

MP01397-1: 84535-1-PBS capture and 84535-2-PBS detection (validated in Cytometric bead array)

MP01397-3: 84535-3-PBS capture and 84535-2-PBS detection (validated in Sandwich ELISA)

Unconjugated rabbit recombinant monoclonal antibody in PBS only (BSA and azide free) storage buffer at a concentration of 1 mg/mL, ready for conjugation. Created using Proteintech's proprietary in-house recombinant technology. Recombinant production enables unrivalled batch-to-batch consistency, easy scale-up, and future security of supply.

This conjugation ready format makes antibodies ideal for use in many applications including: ELISAs, multiplex assays requiring matched pairs, mass cytometry, and multiplex imaging applications. Antibody use should be optimized by the end user for each application and assay.

## Background Information

Interleukin-17 receptor A (IL17A) is a major effector cytokine of the innate and adaptive immune system and is involved in antimicrobial host defense and maintenance of tissue integrity. It has been shown that IL-17A is involved in the pathogenesis of asthma and allergy and regulates local immune and inflammatory processes in bone tissue and is involved in the onset and progression of osteoporosis. In addition to this, due to polymorphisms in the IL17RA gene, it leads to the development of Fanconi anemia.

## Storage

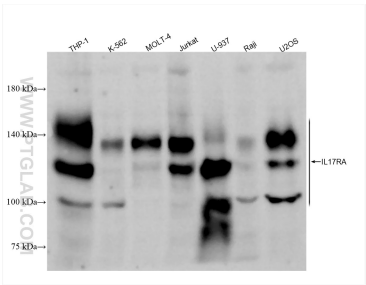
**Storage:**  
Store at -80°C.

**Storage Buffer:**  
PBS Only

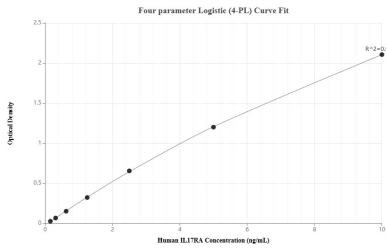
For technical support and original validation data for this product please contact:  
T: 1 (888) 4PTGLAB (1-888-478-4522) (toll free in USA), or 1(312) 455-8498 (outside USA)  
E: [proteintech@ptglab.com](mailto:proteintech@ptglab.com)  
W: [ptglab.com](http://ptglab.com)

This product is exclusively available under Proteintech Group brand and is not available to purchase from any other manufacturer.

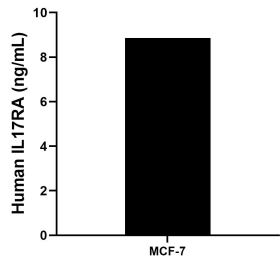
Selected Validation Data



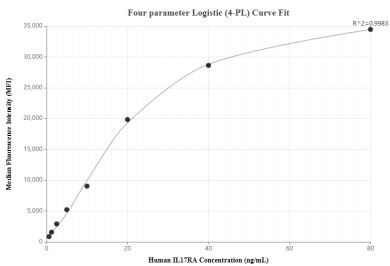
Various lysates were subjected to SDS PAGE followed by western blot with 84535-2-RR (IL17RA antibody) at dilution of 1:1000 incubated at room temperature for 1.5 hours. This data was developed using the same antibody clone with 84535-2-PBS in a different storage buffer formulation.



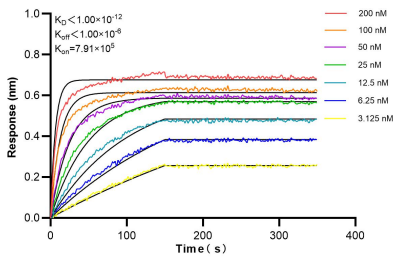
Sandwich ELISA standard curve of MP01397-3, Human IL17RA Recombinant Matched Antibody Pair - PBS only. 84535-3-PBS was coated to a plate as the capture antibody and incubated with serial dilutions of standard Eg2317. 84535-2-PBS was HRP conjugated as the detection antibody. Range: 0.156-10 ng/mL



The mean IL17RA concentration was determined to be 8.86 ng/mL in MCF-7 cell extract based on a 1.2 mg/mL extract load.



Cytometric bead array standard curve of MP01397-1, IL17RA Recombinant Matched Antibody Pair, PBS Only. Capture antibody: 84535-1-PBS. Detection antibody: 84535-2-PBS. Standard: Eg2317. Range: 0.625-80 ng/mL



Biolayer interferometry (BLI) kinetic assays of 84535-2-RR against Human IL17RA were performed. The affinity constant is below 1 pM.