

For Research Use Only

Mouse BAFF Recombinant antibody, PBS Only (Capture)

Catalog Number: 84541-1-PBS



Basic Information

Catalog Number:

84541-1-PBS

Size:

100ug, Concentration: 1 mg/ml by Nanodrop;

Source:

Rabbit

Isotype:

IgG

GenBank Accession Number:

NM_033622

GeneID (NCBI):

24099

UNIPROT ID:

Q9WU72

Full Name:

tumor necrosis factor (ligand) superfamily, member 13b

Calculated MW:

34kd

Purification Method:

Protein A purification

CloneNo.:

242006D4

Applications

Tested Applications:

Cytometric bead array, Sandwich ELISA, Indirect ELISA, Sample test

Species Specificity:

mouse

Product Information

84541-1-PBS targets BAFF as part of a matched antibody pair:

MP01378-1: 84541-1-PBS capture and 84541-2-PBS detection (validated in Cytometric bead array, Sandwich ELISA)

Unconjugated rabbit recombinant monoclonal antibody in PBS only (BSA and azide free) storage buffer at a concentration of 1 mg/mL, ready for conjugation. Created using Proteintech's proprietary in-house recombinant technology. Recombinant production enables unrivalled batch-to-batch consistency, easy scale-up, and future security of supply.

This conjugation ready format makes antibodies ideal for use in many applications including: ELISAs, multiplex assays requiring matched pairs, mass cytometry, and multiplex imaging applications. Antibody use should be optimized by the end user for each application and assay.

Storage

Storage:

Store at -80°C.

Storage Buffer:

PBS Only

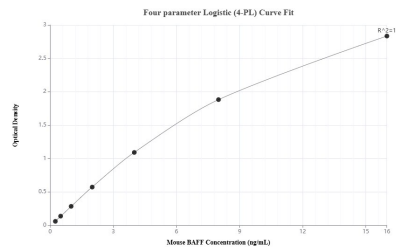
For technical support and original validation data for this product please contact:

T: 1 (888) 4PTGLAB (1-888-478-4522) (toll free in USA), or 1(312) 455-8498 (outside USA)

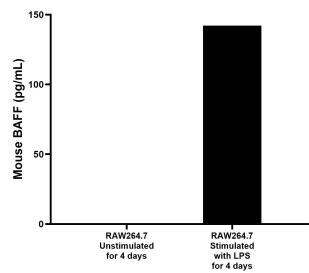
E: proteintech@ptglab.com
W: ptglab.com

This product is exclusively available under Proteintech Group brand and is not available to purchase from any other manufacturer.

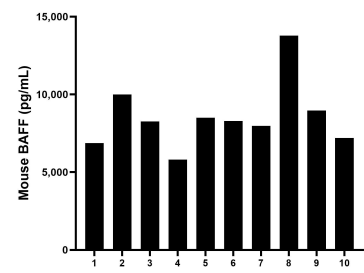
Selected Validation Data



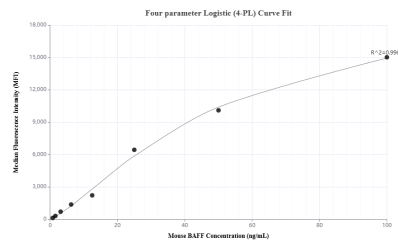
Sandwich ELISA standard curve of MP01378-1, Mouse BAFF Recombinant Matched Antibody Pair - PBS only. 84541-1-PBS was coated to a plate as the capture antibody and incubated with serial dilutions of standard Eg1555. 84541-2-PBS was HRP conjugated as the detection antibody. Range: 0.25-16 ng/mL



RAW264.7 cells were cultured unstimulated or stimulated with 1 µg/mL LPS for 4 days. The mean BAFF concentration was undetectable in unstimulated RAW264.7 supernatant, 142.2 pg/mL in stimulated RAW264.7 supernatant.



Serum of ten individual healthy human donors was measured. The mouse BAFF concentration of detected samples was determined to be 8,569.6 pg/mL with a range of 5,806.1 - 13,775.4 pg/mL



Cytometric bead array standard curve of MP01378-1, MOUSE BAFF Recombinant Matched Antibody Pair, PBS Only. Capture antibody: 84541-1-PBS. Detection antibody: 84541-2-PBS. Standard: Eg1555. Range: 0.781-100 ng/mL