

For Research Use Only

ADH1C Recombinant antibody

Catalog Number: 84546-2-RR



Basic Information

Catalog Number:

84546-2-RR

Size:

100ul , Concentration: 1000 µg/ml by
Nanodrop;

Source:

Rabbit

Isotype:

IgG

Immunogen Catalog Number:

AG13528

GenBank Accession Number:

BC062476

GeneID (NCBI):

126

UNIPROT ID:

P00326

Full Name:

alcohol dehydrogenase 1C (class I),
gamma polypeptide

Calculated MW:

375 aa, 40 kDa

Observed MW:

37-45 kDa

Purification Method:

Protein A purification

CloneNo.:

241623A3

Recommended Dilutions:

WB 1:5000-1:50000

Applications

Tested Applications:

WB, ELISA

Species Specificity:

human, mouse

Positive Controls:

WB : mouse liver tissue, mouse colon tissue, human
kidney tissue

Background Information

Alcohol dehydrogenase 1C (ADH1C), also known as ADH3, is an alcohol dehydrogenase that can catalyze ethanol oxidation to metabolite acetaldehyde. According to THE HUMAN PROTEIN ATLAS database, ADH1C locates mainly to the cytosol and plasma membrane. Genetic polymorphism of the ADH1C gene (ADH1C*1 allele) is associated with various human cancers, such as gastric cancer, oral cancer and CRC, for it encodes an alcohol dehydrogenase producing 2.5 times more acetaldehyde. (PMID: 35300114)

Storage

Storage:

Store at -20°C. Stable for one year after shipment.

Storage Buffer:

PBS with 0.02% sodium azide and 50% glycerol, pH7.3

Aliquoting is unnecessary for -20°C storage

*** 20ul sizes contain 0.1% BSA

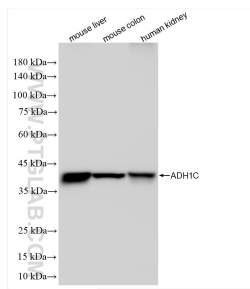
For technical support and original validation data for this product please contact:

T: 1 (888) 4PTGLAB (1-888-478-4522) (toll free
in USA), or 1(312) 455-8498 (outside USA)

E: proteintech@ptglab.com
W: ptglab.com

This product is exclusively available under Proteintech
Group brand and is not available to purchase from any
other manufacturer.

Selected Validation Data



Various lysates were subjected to SDS PAGE followed by western blot with 84546-2-RR (ADH1C antibody) at dilution of 1:10000 incubated at room temperature for 1.5 hours.