

For Research Use Only

ANP32CP Recombinant antibody

Catalog Number: 84553-1-RR



Basic Information

Catalog Number: 84553-1-RR	GenBank Accession Number: NM_012403.1	Purification Method: Protein A purification
Size: 100ul , Concentration: 1000 µg/ml by Nanodrop;	GeneID (NCBI): 23520	CloneNo.: 241562D12
Source: Rabbit	UNIPROT ID: O43423	Recommended Dilutions: WB 1:5000-1:50000 IF/ICC 1:125-1:500
Isotype: IgG	Full Name: acidic (leucine-rich) nuclear phosphoprotein 32 family, member C	
Immunogen Catalog Number: AG35293	Calculated MW: 27 kDa	
	Observed MW: 27-30 kDa	

Applications

Tested Applications: WB, IF/ICC, ELISA	Positive Controls:
Species Specificity: human	WB : HUVEC cells, BxPC-3 cells, LNCaP cells, MCF-7 cells, DU 145 cells IF/ICC : LNCaP cells,

Background Information

ANP32CP (acidic nuclear phosphoprotein 32 family member C, pseudogene), also known as PP32R1. It is expected to be located in nucleus and perinuclear region of cytoplasm. Expressed in activated stem cells, such as mobilized CD34+ cells and cord blood CD34+ cells, but not in resting bone marrow CD34+ cells. Expressed in a variety of neoplastic cell lines, mainly in prostatic adenocarcinoma cell lines. Not expressed in normal prostatic tissue (PMID: 10086381). The calculated molecular weight of ANP32CP is 27 kDa. The protein could be the product of a pseudogene. Gene encoding ANP32CP is intronless suggesting that is pseudogene generated by retrotransposition.

Storage

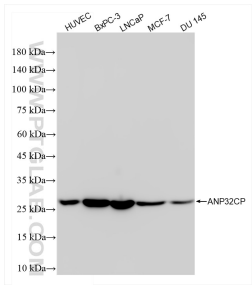
Storage:
Store at -20°C. Stable for one year after shipment.
Storage Buffer:
PBS with 0.02% sodium azide and 50% glycerol pH 7.3.
Aliquoting is unnecessary for -20°C storage

*** 20ul sizes contain 0.1% BSA

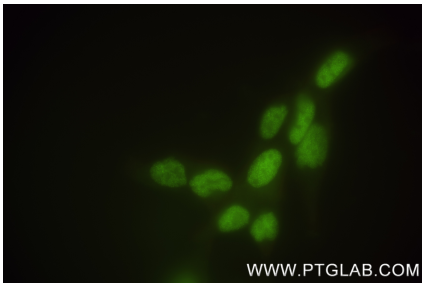
For technical support and original validation data for this product please contact:
T: 1 (888) 4PTGLAB (1-888-478-4522) (toll free in USA), or 1(312) 455-8498 (outside USA)
E: proteintech@ptglab.com
W: ptglab.com

This product is exclusively available under Proteintech Group brand and is not available to purchase from any other manufacturer.

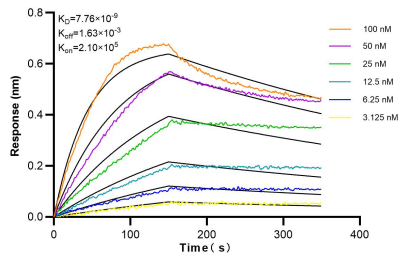
Selected Validation Data



Various lysates were subjected to SDS PAGE followed by western blot with 84553-1-RR (ANP32CP antibody) at dilution of 1:10000 incubated at room temperature for 1.5 hours.



Immunofluorescent analysis of (4% PFA) fixed LNCaP cells using ANP32CP antibody (84553-1-RR, Clone: 241562D12) at dilution of 1:250 and CoraLite® 488-Conjugated Goat Anti-Rabbit IgG(H+L) (SA00013-2).



Biolayer interferometry (BLI) kinetic assays of 84553-1-RR against Human ANP32CP were performed. The affinity constant is 7.76 nM.