

For Research Use Only

# TMEM175 Recombinant antibody

Catalog Number: 84554-1-RR



## Basic Information

<b>Catalog Number:</b> 84554-1-RR	<b>GenBank Accession Number:</b> BC005158	<b>Purification Method:</b> Protein A purification
<b>Size:</b> 100ul , Concentration: 550 µg/ml by Nanodrop;	<b>GeneID (NCBI):</b> 84286	<b>CloneNo.:</b> 241567B9
<b>Source:</b> Rabbit	<b>UNIPROT ID:</b> Q9BSA9	<b>Recommended Dilutions:</b> WB 1:500-1:2000
<b>Isotype:</b> IgG	<b>Full Name:</b> transmembrane protein 175	
<b>Immunogen Catalog Number:</b> AG13890	<b>Calculated MW:</b> 504 aa, 56 kDa	
	<b>Observed MW:</b> 41-45 kDa, 54-60 kDa	

## Applications

<b>Tested Applications:</b> WB, ELISA	<b>Positive Controls:</b> WB : HeLa cells, HepG2 cells, HEK-293 cells, Jurkat cells, LNCaP cells
<b>Species Specificity:</b> human	

## Background Information

TMEM175 has two repeats of 6-transmembrane-spanning segments and has no GYG K<sup>+</sup> channel sequence signature-containing, pore-forming P loop. Lysosomes lacking TMEM175 exhibit no K<sup>+</sup> conductance, have a markedly depolarized  $\Delta\Psi$  and little sensitivity to changes in [K<sup>+</sup>], and have compromised luminal pH stability and abnormal fusion with autophagosomes during autophagy. TMEM175 comprises a K<sup>+</sup> channel that underlies the molecular mechanism of lysosomal K<sup>+</sup> permeability. It has two isoforms with MW 41-45 kDa and 54-60 kDa. For optimal WB detection with this antibody, we recommend avoiding boiling the sample after lysis.

## Storage

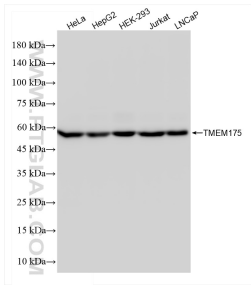
**Storage:**  
Store at -20°C. Stable for one year after shipment.  
**Storage Buffer:**  
PBS with 0.02% sodium azide and 50% glycerol pH 7.3.  
Aliquoting is unnecessary for -20°C storage

\*\*\* 20ul sizes contain 0.1% BSA

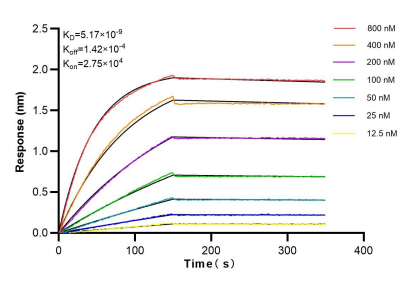
For technical support and original validation data for this product please contact:  
T: 1 (888) 4PTGLAB (1-888-478-4522) (toll free in USA), or 1(312) 455-8498 (outside USA)  
E: proteintech@ptglab.com  
W: ptglab.com

This product is exclusively available under Proteintech Group brand and is not available to purchase from any other manufacturer.

## Selected Validation Data



Various lysates were subjected to SDS PAGE followed by western blot with 84554-1-RR (TMEM175 antibody) at dilution of 1:1000 incubated at room temperature for 1.5 hours.



Biolayer interferometry (BLI) kinetic assays of 84554-1-RR against Human TMEM175 were performed. The affinity constant is 5.17 nM.