

For Research Use Only

SCYL1 Recombinant antibody, PBS Only

Catalog Number: 84561-1-PBS



Basic Information

Catalog Number:

84561-1-PBS

Size:

100ug, Concentration: 1 mg/ml by Nanodrop;

Source:

Rabbit

Isotype:

IgG

Immunogen Catalog Number:

AG35298

GenBank Accession Number:

NM_020680

GeneID (NCBI):

57410

UNIPROT ID:

Q96KG9

Full Name:

SCY1-like 1 (S. cerevisiae)

Calculated MW:

90 kDa

Observed MW:

110 kDa

Purification Method:

Protein A purification

CloneNo.:

241635D12

Applications

Tested Applications:

WB, Indirect ELISA

Species Specificity:

human, mouse

Storage

Storage:

Store at -80°C.

Storage Buffer:

PBS Only

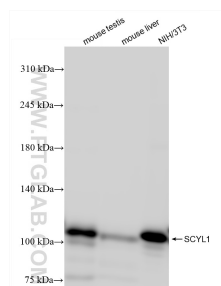
For technical support and original validation data for this product please contact:

T: 1 (888) 4PTGLAB (1-888-478-4522) (toll free in USA), or 1(312) 455-8498 (outside USA)

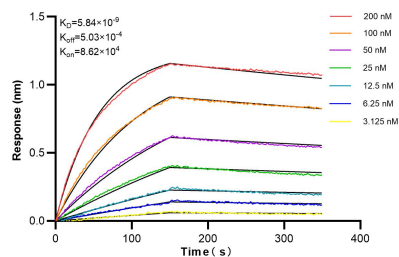
E: proteintech@ptglab.com
W: ptglab.com

This product is exclusively available under Proteintech Group brand and is not available to purchase from any other manufacturer.

Selected Validation Data



Various lysates were subjected to SDS PAGE followed by western blot with 84561-1-RR (SCYL1 antibody) at dilution of 1:9000 incubated at room temperature for 1.5 hours. This data was developed using the same antibody clone with 84561-1-PBS in a different storage buffer formulation.



Biolayer interferometry (BLI) kinetic assays of 84561-1-RR against Human SCYL1 were performed. The affinity constant is below 5.84 nM.