

For Research Use Only

# Phospho-SH3PXD2B (Ser291) Recombinant antibody, PBS Only

Catalog Number: 84563-1-PBS



## Basic Information

### Catalog Number:

84563-1-PBS

### Size:

100ug, Concentration: 1 mg/ml by Nanodrop;

### Source:

Rabbit

### Isotype:

IgG

### GenBank Accession Number:

NM\_001017995

### GeneID (NCBI):

285590

### UNIPROT ID:

A1X283

### Full Name:

SH3 and PX domains 2B

### Calculated MW:

911aa, 102 kDa

### Observed MW:

120 kDa

### Purification Method:

Protein A purification

### CloneNo.:

241064C5

## Applications

### Tested Applications:

WB, Indirect ELISA

### Species Specificity:

human

## Background Information

SH3 and PX domains 2B (SH3PXD2B) is also known as tyrosine kinase substrate with four SH3 domains (Tks4). It consists of the N-terminal phox homology domain, four Sr homology 3 domains, several proline-rich regions, and Src phosphorylation sites. Previous studies have shown that SH3PXD2B is an essential invadopodium scaffold protein and can stimulate actin polymerization, recruit membrane type-1 matrix metalloproteinase (MT1-MMP) to intracellular membranes, and increase Nox1-dependent reactive oxygen species (ROS) production. (PMID: 33906640)

## Storage

### Storage:

Store at -80°C.

### Storage Buffer:

PBS only, pH7.3

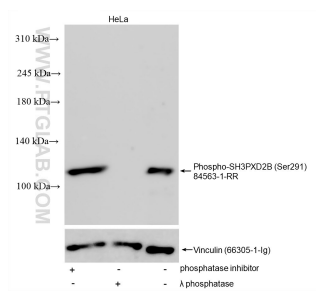
For technical support and original validation data for this product please contact:

T: 1 (888) 4PTGLAB (1-888-478-4522) (toll free in USA), or 1(312) 455-8498 (outside USA)

E: [proteintech@ptglab.com](mailto:proteintech@ptglab.com)  
W: [ptglab.com](http://ptglab.com)

This product is exclusively available under Proteintech Group brand and is not available to purchase from any other manufacturer.

## Selected Validation Data



Non-treated HeLa cells, phosphatase inhibitor treated HeLa cells and λ phosphatase treated HeLa cells were subjected to SDS PAGE followed by western blot with 84563-1-RR (Phospho-SH3PXD2B (Ser291) antibody) at dilution of 1:2000 incubated at room temperature for 1.5 hours. The membrane was stripped and re-blotted with Vinculin (66305-1-Ig) antibody as a loading control. This data was developed using the same antibody clone with 84563-1-

