

For Research Use Only

ER Recombinant antibody, PBS Only (Capture)

Catalog Number: 84564-12-PBS



Basic Information

Catalog Number: 84564-12-PBS	GenBank Accession Number: BC128573	Purification Method: Protein A purification
Size: 100ug , Concentration: 1 mg/ml by Nanodrop;	GeneID (NCBI): 2099	CloneNo.: 250324G6
Source: Rabbit	UNIPROT ID: P03372	
Isotype: IgG	Full Name: estrogen receptor 1	
Immunogen Catalog Number: EG2234	Calculated MW: 595 aa, 66 kDa	

Applications

Tested Applications:
Sandwich ELISA, Indirect ELISA, Sample test

Species Specificity:
human

Product Information

84564-12-PBS targets ER as part of a matched antibody pair:

MP01406-2: 84564-12-PBS capture and 84564-8-PBS detection (validated in Sandwich ELISA)

Unconjugated rabbit recombinant monoclonal antibody in PBS only (BSA and azide free) storage buffer at a concentration of 1 mg/mL, ready for conjugation. Created using Proteintech's proprietary in-house recombinant technology. Recombinant production enables unrivalled batch-to-batch consistency, easy scale-up, and future security of supply.

This conjugation ready format makes antibodies ideal for use in many applications including: ELISAs, multiplex assays requiring matched pairs, mass cytometry, and multiplex imaging applications. Antibody use should be optimized by the end user for each application and assay.

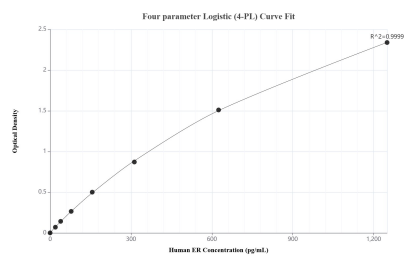
Storage

Storage:
Store at -80°C.
Storage Buffer:
PBS only, pH7.3

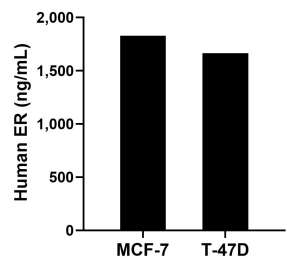
For technical support and original validation data for this product please contact:
T: 1 (888) 4PTGLAB (1-888-478-4522) (toll free in USA), or 1(312) 455-8498 (outside USA)
E: proteintech@ptglab.com
W: ptglab.com

This product is exclusively available under Proteintech Group brand and is not available to purchase from any other manufacturer.

Selected Validation Data



Sandwich ELISA standard curve of MP01406-2, Human ER Recombinant Matched Antibody Pair - PBS only. 84564-12-PBS was coated to a plate as the capture antibody and incubated with serial dilutions of standard Eg2234. 84564-8-PBS was HRP conjugated as the detection antibody. Range: 19.5-1250 pg/mL



The mean ER concentration was determined to be 1,828.0 pg/mL in MCF-7 cell extract based on a 1.3 mg/mL extract load and 1,662.9 pg/mL in T-47D cell extract based on a 1.2 mg/mL extract load.