

For Research Use Only

DPCR1 Recombinant antibody, PBS Only

Catalog Number: 84567-2-PBS



Basic Information

Catalog Number:

84567-2-PBS

Size:

100ug , Concentration: 1 mg/ml by Nanodrop;

Source:

Rabbit

Isotype:

IgG

Immunogen Catalog Number:

AG33318

GenBank Accession Number:

NM_080870

GeneID (NCBI):

135656

UNIPROT ID:

Q3MIW9

Full Name:

diffuse panbronchiolitis critical region 1

Calculated MW:

56 kDa

Observed MW:

56 kDa

Purification Method:

Protein A purification

CloneNo.:

241974D11

Applications

Tested Applications:

WB, Indirect ELISA

Species Specificity:

human

Background Information

Diffuse panbronchiolitis critical region 1 (DPCR1) is located in the major histocompatibility complex (MHC) class I. DPCR1 is downregulated in invasive pituitary adenoma compared with that in non-invasive tumors, but upregulated in the precursor of gastric carcinogenesis (PMID: 29242154).

Storage

Storage:

Store at -80°C.

Storage Buffer:

PBS Only

For technical support and original validation data for this product please contact:

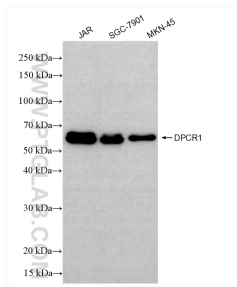
T: 1 (888) 4PTGLAB (1-888-478-4522) (toll free in USA), or 1(312) 455-8498 (outside USA)

E: proteintech@ptglab.com

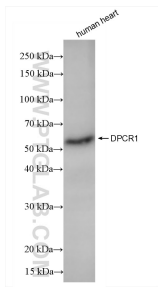
W: ptglab.com

This product is exclusively available under Proteintech Group brand and is not available to purchase from any other manufacturer.

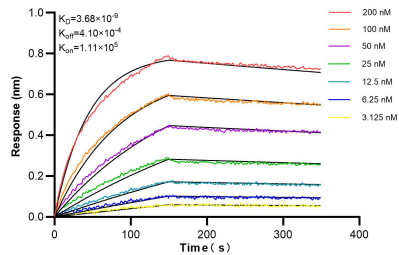
Selected Validation Data



Various lysates were subjected to SDS PAGE followed by western blot with 84567-2-RR (DPCR1 antibody) at dilution of 1:8000 incubated at room temperature for 1.5 hours. This data was developed using the same antibody clone with 84567-2-PBS in a different storage buffer formulation.



human heart tissue were subjected to SDS PAGE followed by western blot with 84567-2-RR (DPCR1 antibody) at dilution of 1:8000 incubated at room temperature for 1.5 hours. This data was developed using the same antibody clone with 84567-2-PBS in a different storage buffer formulation.



Biolayer interferometry (BLI) kinetic assays of 84567-2-RR against Human DPCR1 were performed. The affinity constant is 3.68 nM.