

For Research Use Only

# RGNEF Recombinant antibody, PBS Only (Capture)

Catalog Number: 84570-2-PBS



## Basic Information

<b>Catalog Number:</b> 84570-2-PBS	<b>GenBank Accession Number:</b> BC012946	<b>Purification Method:</b> Protein A purification
<b>Size:</b> 100ug , Concentration: 1 mg/ml by Nanodrop;	<b>GeneID (NCBI):</b> 64283	<b>CloneNo.:</b> 241975E4
<b>Source:</b> Rabbit	<b>UNIPROT ID:</b> Q8N1W1	
<b>Isotype:</b> IgG	<b>Full Name:</b> Rho-guanine nucleotide exchange factor	
<b>Immunogen Catalog Number:</b> AG10915	<b>Calculated MW:</b> 192 kDa	
	<b>Observed MW:</b> 192 kDa	

## Applications

**Tested Applications:**  
WB, Cytometric bead array, Indirect ELISA

**Species Specificity:**  
human

## Product Information

84570-2-PBS targets RGNEF as part of a matched antibody pair:

MP01414-1: 84570-2-PBS capture and 84570-1-PBS detection (validated in Cytometric bead array)

Unconjugated rabbit recombinant monoclonal antibody in PBS only (BSA and azide free) storage buffer at a concentration of 1 mg/mL, ready for conjugation. Created using Proteintech's proprietary in-house recombinant technology. Recombinant production enables unrivalled batch-to-batch consistency, easy scale-up, and future security of supply.

This conjugation ready format makes antibodies ideal for use in many applications including: ELISAs, multiplex assays requiring matched pairs, mass cytometry, and multiplex imaging applications. Antibody use should be optimized by the end user for each application and assay.

## Background Information

ARHGEF28, also known as RGNEF or p190RhoGEF, is a 190 kDa RNA binding protein (RBP) that contains a Dbp/PH domain capable of RhoA activation. ARHGEF28 interacts with low molecular weight neurofilament mRNA and may be involved in the formation of amyotrophic lateral sclerosis neurofilament aggregates.

## Storage

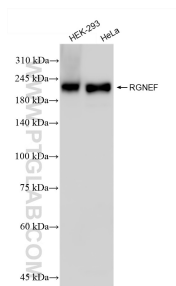
**Storage:**  
Store at -80°C.

**Storage Buffer:**  
PBS Only

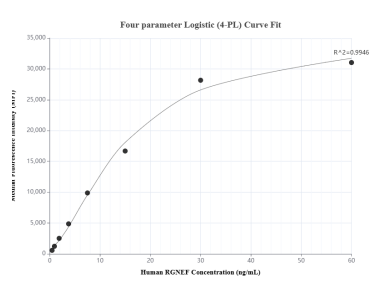
For technical support and original validation data for this product please contact:  
T: 1 (888) 4PTGLAB (1-888-478-4522) (toll free in USA), or 1(312) 455-8498 (outside USA)  
E: [proteintech@ptglab.com](mailto:proteintech@ptglab.com)  
W: [ptglab.com](http://ptglab.com)

This product is exclusively available under Proteintech Group brand and is not available to purchase from any other manufacturer.

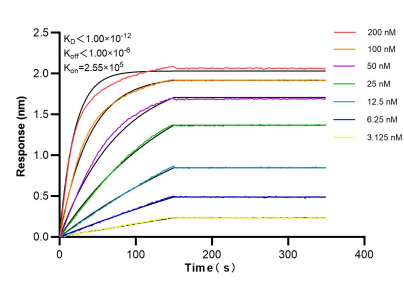
## Selected Validation Data



Various lysates were subjected to SDS PAGE followed by western blot with 84570-2-RR (RGNEF antibody) at dilution of 1:4000 incubated at room temperature for 1.5 hours. This data was developed using the same antibody clone with 84570-2-PBS in a different storage buffer formulation.



Cytometric bead array standard curve of MP01414-1, RGNEF Recombinant Matched Antibody Pair, PBS Only. Capture antibody: 84570-2-PBS. Detection antibody: 84570-1-PBS. Standard: Ag10915. Range: 0.469-60 ng/mL.



Biolayer interferometry (BLI) kinetic assays of 84570-2-RR against Human RGNEF were performed. The affinity constant is below 1 pM.