

For Research Use Only

RGNEF Recombinant antibody

Catalog Number: 84570-2-RR



Basic Information

Catalog Number: 84570-2-RR	GenBank Accession Number: BC012946	Purification Method: Protein A purification
Size: 100ul , Concentration: 1000 µg/ml by Nanodrop;	GeneID (NCBI): 64283	CloneNo.: 241975E4
Source: Rabbit	UNIPROT ID: Q8N1W1	Recommended Dilutions: WB 1:1000-1:8000
Isotype: IgG	Full Name: Rho-guanine nucleotide exchange factor	
Immunogen Catalog Number: AG10915	Calculated MW: 192 kDa	
	Observed MW: 192 kDa	

Applications

Tested Applications: WB, ELISA	Positive Controls: WB : HEK-293 cells, HeLa cells
Species Specificity: human	

Background Information

ARHGEF28, also known as RGNEF or p190RhoGEF, is a 190 kDa RNA binding protein (RBP) that contains a Dbp/PH domain capable of RhoA activation. ARHGEF28 interacts with low molecular weight neurofilament mRNA and may be involved in the formation of amyotrophic lateral sclerosis neurofilament aggregates.

Storage

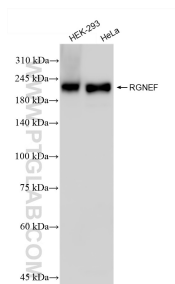
Storage:
Store at -20°C. Stable for one year after shipment.
Storage Buffer:
PBS with 0.02% sodium azide and 50% glycerol pH 7.3.
Aliquoting is unnecessary for -20°C storage

*** 20ul sizes contain 0.1% BSA

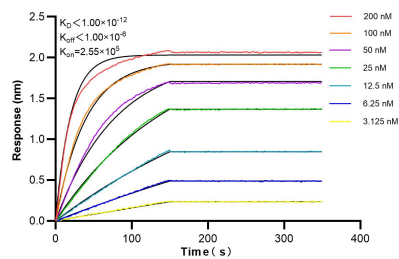
For technical support and original validation data for this product please contact:
T: 1 (888) 4PTGLAB (1-888-478-4522) (toll free in USA), or 1(312) 455-8498 (outside USA)
E: proteintech@ptglab.com
W: ptglab.com

This product is exclusively available under Proteintech Group brand and is not available to purchase from any other manufacturer.

Selected Validation Data



Various lysates were subjected to SDS PAGE followed by western blot with 84570-2-RR (RGNEF antibody) at dilution of 1:4000 incubated at room temperature for 1.5 hours.



Biolayer interferometry (BLI) kinetic assays of 84570-2-RR against Human RGNEF were performed. The affinity constant is below 1 pM.