

For Research Use Only

CTRL Recombinant antibody, PBS Only

Catalog Number: 84572-4-PBS



Basic Information

Catalog Number:

84572-4-PBS

Size:

100ug , Concentration: 1 mg/ml by Nanodrop;

Source:

Rabbit

Isotype:

IgG

GenBank Accession Number:

BC063475

GeneID (NCBI):

1506

UNIPROT ID:

P40313

Full Name:

chymotrypsin-like

Calculated MW:

28 kDa

Observed MW:

25-28 kDa

Purification Method:

Protein A purification

CloneNo.:

241858D7

Applications

Tested Applications:

WB, Indirect ELISA

Species Specificity:

human, mouse, rat

Background Information

CTRL(Chymotrypsin-like protease) is also named as CTRL1 and belongs to the peptidase S1 family. The CTRL1 enzyme is active over a broad pH range. It expresses in pancreas and presence in intestinal fluid after stimulation of pancreatic secretion as a digestive enzyme(PMID:9065485). This gene encode a protein of 264 amino acid and the protein has a signal peptide of 18 amino acid and a propeptide of 15 amino acid.

Storage

Storage:

Store at -80°C.

Storage Buffer:

PBS Only

For technical support and original validation data for this product please contact:

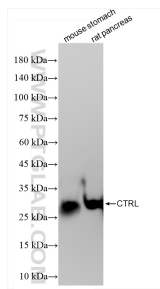
T: 1 (888) 4PTGLAB (1-888-478-4522) (toll free in USA), or 1(312) 455-8498 (outside USA)

E: proteintech@ptglab.com

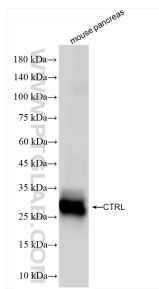
W: ptglab.com

This product is exclusively available under Proteintech Group brand and is not available to purchase from any other manufacturer.

Selected Validation Data



Various lysates were subjected to SDS PAGE followed by western blot with 84572-4-RR (CTRL antibody) at dilution of 1:20000 incubated at room temperature for 1.5 hours. This data was developed using the same antibody clone with 84572-4-PBS in a different storage buffer formulation.



mouse pancreas tissue were subjected to SDS PAGE followed by western blot with 84572-4-RR (CTRL antibody) at dilution of 1:20000 incubated at room temperature for 1.5 hours. This data was developed using the same antibody clone with 84572-4-PBS in a different storage buffer formulation.