

For Research Use Only

Mouse PD-L2/B7-DC Recombinant antibody, PBS Only (Detector)

Catalog Number: 84573-4-PBS



Basic Information

Catalog Number: 84573-4-PBS	GenBank Accession Number: NM_021396.2	Purification Method: Protein A purification
Size: 100ug , Concentration: 1 mg/ml by Nanodrop;	GeneID (NCBI): 58205	CloneNo.: 241728D6
Source: Rabbit	UNIPROT ID: Q9WUL5	
Isotype: IgG	Full Name: programmed cell death 1 ligand 2	
	Calculated MW: 28kDa	

Applications

Tested Applications:
Sandwich ELISA, Indirect ELISA, Sample test

Species Specificity:
mouse

Product Information

84573-4-PBS targets PD-L2/B7-DC as part of a matched antibody pair:

MP01413-3: 84573-5-PBS capture and 84573-4-PBS detection (validated in Sandwich ELISA)

Unconjugated rabbit recombinant monoclonal antibody in PBS only (BSA and azide free) storage buffer at a concentration of 1 mg/mL, ready for conjugation. Created using Proteintech's proprietary in-house recombinant technology. Recombinant production enables unrivalled batch-to-batch consistency, easy scale-up, and future security of supply.

This conjugation ready format makes antibodies ideal for use in many applications including: ELISAs, multiplex assays requiring matched pairs, mass cytometry, and multiplex imaging applications. Antibody use should be optimized by the end user for each application and assay.

Storage

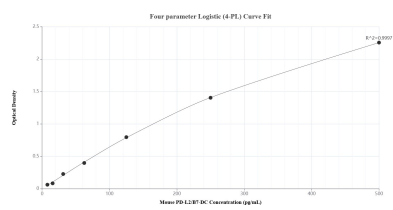
Storage:
Store at -80°C.

Storage Buffer:
PBS Only

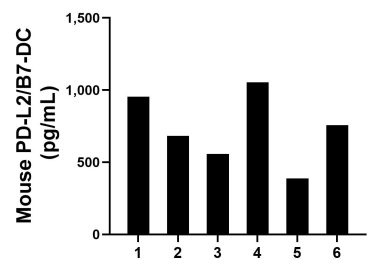
For technical support and original validation data for this product please contact:
T: 1 (888) 4PTGLAB (1-888-478-4522) (toll free in USA), or 1(312) 455-8498 (outside USA)
E: proteintech@ptglab.com
W: ptglab.com

This product is exclusively available under Proteintech Group brand and is not available to purchase from any other manufacturer.

Selected Validation Data



Sandwich ELISA standard curve of MP01413-3, Mouse PD-L2/B7-DC Recombinant Matched Antibody Pair - PBS only. 84573-5-PBS was coated to a plate as the capture antibody and incubated with serial dilutions of standard Eg1842. 84573-4-PBS was HRP conjugated as the detection antibody. Range: 15.6-500 pg/mL



Serum of six mice was measured. The PD-L2/B7-DC concentration of detected samples was determined to be 731.7 pg/mL with a range of 387.7-1,052.8 pg/mL