

For Research Use Only

# Mouse PD-L2/B7-DC Recombinant antibody, PBS Only (Capture)

Catalog Number: 84573-5-PBS



## Basic Information

<b>Catalog Number:</b> 84573-5-PBS	<b>GenBank Accession Number:</b> NM_021396.2	<b>Purification Method:</b> Protein A purification
<b>Size:</b> 100ug , Concentration: 1 mg/ml by Nanodrop;	<b>GeneID (NCBI):</b> 58205	<b>CloneNo.:</b> 241728H2
<b>Source:</b> Rabbit	<b>UNIPROT ID:</b> Q9WUL5	
<b>Isotype:</b> IgG	<b>Full Name:</b> programmed cell death 1 ligand 2	
	<b>Calculated MW:</b> 28kDa	

## Applications

**Tested Applications:**  
Sandwich ELISA, Indirect ELISA, Sample test

**Species Specificity:**  
mouse

## Product Information

84573-5-PBS targets PD-L2/B7-DC as part of a matched antibody pair:

MP01413-3: 84573-5-PBS capture and 84573-4-PBS detection (validated in Sandwich ELISA)

Unconjugated rabbit recombinant monoclonal antibody in PBS only (BSA and azide free) storage buffer at a concentration of 1 mg/mL, ready for conjugation. Created using Proteintech's proprietary in-house recombinant technology. Recombinant production enables unrivalled batch-to-batch consistency, easy scale-up, and future security of supply.

This conjugation ready format makes antibodies ideal for use in many applications including: ELISAs, multiplex assays requiring matched pairs, mass cytometry, and multiplex imaging applications. Antibody use should be optimized by the end user for each application and assay.

## Storage

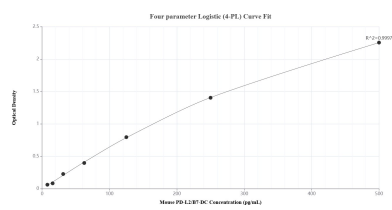
**Storage:**  
Store at -80°C.

**Storage Buffer:**  
PBS Only

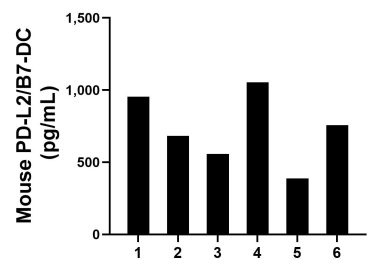
For technical support and original validation data for this product please contact:  
T: 1 (888) 4PTGLAB (1-888-478-4522) (toll free in USA), or 1(312) 455-8498 (outside USA)  
E: [proteintech@ptglab.com](mailto:proteintech@ptglab.com)  
W: [ptglab.com](http://ptglab.com)

This product is exclusively available under Proteintech Group brand and is not available to purchase from any other manufacturer.

## Selected Validation Data



Sandwich ELISA standard curve of MP01413-3, Mouse PD-L2/B7-DC Recombinant Matched Antibody Pair - PBS only. 84573-5-PBS was coated to a plate as the capture antibody and incubated with serial dilutions of standard Eg1842. 84573-4-PBS was HRP conjugated as the detection antibody. Range: 15.6-500 pg/mL



Serum of six mice was measured. The PD-L2/B7-DC concentration of detected samples was determined to be 731.7 pg/mL with a range of 387.7-1,052.8 pg/mL