

For Research Use Only

LTBP2 Recombinant antibody

Catalog Number: 84574-4-RR



Basic Information

Catalog Number: 84574-4-RR	GenBank Accession Number: BC078659	Purification Method: Protein A purification
Size: 100ul , Concentration: 1000 µg/ml by Nanodrop;	GeneID (NCBI): 4053	CloneNo.: 241911C7
Source: Rabbit	UNIPROT ID: Q14767	Recommended Dilutions: WB 1:5000-1:50000
Isotype: IgG	Full Name: latent transforming growth factor beta binding protein 2	
Immunogen Catalog Number: AG29720	Calculated MW: 1821 aa, 195 kDa	
	Observed MW: 290 kDa	

Applications

Tested Applications: WB, ELISA	Positive Controls: WB : PC-3 cells, U2OS cells
Species Specificity: human	

Background Information

LTBP2, an extracellular glycoprotein mapping to chromosome 14q24, belongs to a family of latent TGF- β binding proteins (LTBPs) that regulates a well-known growth factor, TGF- β . LTBP2 is an elastic fiber-associating protein whose function in elastogenesis is not clear, as a DANCEbinding Protein. (PMID: 17581631) It may play an integral structural role in elastic-fiber architectural organization and/or assembly. LTBP2 associates covalently with small latent TGF-beta complex via Repeat B and Repeat C. Defects in LTBP2 are the cause of primary congenital glaucoma type 3D (GLC3D). [MIM:613086] LTBP2 is a role in the structural stability of ciliary zonules, and growth and development of lens.(PMID: 20617341) LTBP2 null mutations in an autosomal recessive ocular syndrome with megalocornea, spherophakia, and secondary glaucoma (PMID: 20179738) . LTBP2 is a biomarker of heart failure. LTBP2 has a molecular weight of 260 kDa (PMID: 20878956), and even larger molecular weights of 290 and 310 kDa were detected in tissue extracts. (PMID: 8524260)

Storage

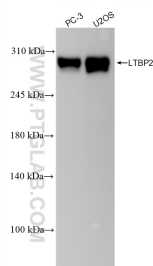
Storage:
Store at -20°C. Stable for one year after shipment.
Storage Buffer:
PBS with 0.02% sodium azide and 50% glycerol pH 7.3.
Aliquoting is unnecessary for -20°C storage

*** 20ul sizes contain 0.1% BSA

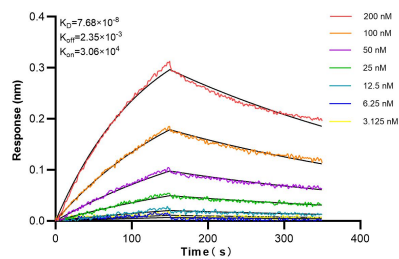
For technical support and original validation data for this product please contact:
T: 1 (888) 4PTGLAB (1-888-478-4522) (toll free in USA), or 1(312) 455-8498 (outside USA)
E: proteintech@ptglab.com
W: ptglab.com

This product is exclusively available under Proteintech Group brand and is not available to purchase from any other manufacturer.

Selected Validation Data



Various lysates were subjected to SDS PAGE followed by western blot with 84574-4-RR (LTBP2 antibody) at dilution of 1:10000 incubated at room temperature for 1.5 hours.



Biolayer interferometry (BLI) kinetic assays of 84574-4-RR against Human LTB2 were performed. The affinity constant is 0.779 nM.