

For Research Use Only

IL31 Recombinant antibody, PBS Only (Detector)

Catalog Number: 84575-3-PBS



Basic Information

Catalog Number: 84575-3-PBS	GenBank Accession Number: BC132998	Purification Method: Protein A purification
Size: 100ug , Concentration: 1 mg/ml by Nanodrop;	GeneID (NCBI): 386653	CloneNo.: 241892G4
Source: Rabbit	UNIPROT ID: Q6EBC2	
Isotype: IgG	Full Name: interleukin 31	
	Calculated MW: 164 aa, 18 kDa	

Applications

Tested Applications:
Cytometric bead array, Sandwich ELISA, Indirect ELISA, Sample test

Species Specificity:
human

Product Information

84575-3-PBS targets IL31 as part of a matched antibody pair:

MP01421-1: 84575-1-PBS capture and 84575-3-PBS detection (validated in Cytometric bead array)

MP01421-2: 84575-2-PBS capture and 84575-3-PBS detection (validated in Cytometric bead array)

MP01421-3: 84575-4-PBS capture and 84575-3-PBS detection (validated in Sandwich ELISA)

Unconjugated rabbit recombinant monoclonal antibody in PBS only (BSA and azide free) storage buffer at a concentration of 1 mg/mL, ready for conjugation. Created using Proteintech's proprietary in-house recombinant technology. Recombinant production enables unrivalled batch-to-batch consistency, easy scale-up, and future security of supply.

This conjugation ready format makes antibodies ideal for use in many applications including: ELISAs, multiplex assays requiring matched pairs, mass cytometry, and multiplex imaging applications. Antibody use should be optimized by the end user for each application and assay.

Storage

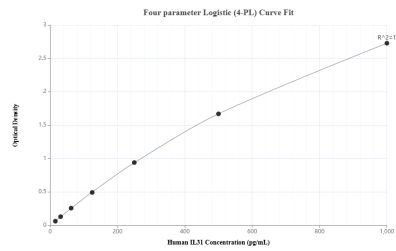
Storage:
Store at -80°C.

Storage Buffer:
PBS Only

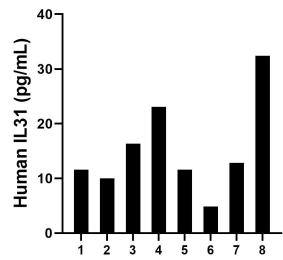
For technical support and original validation data for this product please contact:
T: 1 (888) 4PTGLAB (1-888-478-4522) (toll free in USA), or 1(312) 455-8498 (outside USA)
E: proteintech@ptglab.com
W: ptglab.com

This product is exclusively available under Proteintech Group brand and is not available to purchase from any other manufacturer.

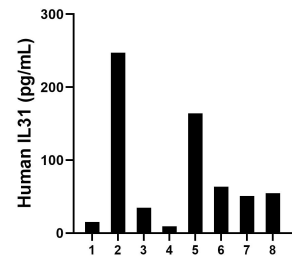
Selected Validation Data



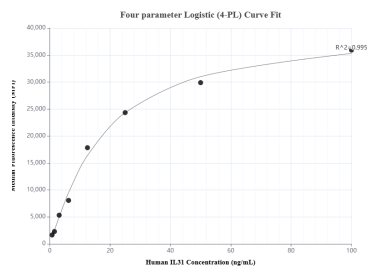
Sandwich ELISA standard curve of MP01421-3, Human IL31 Recombinant Matched Antibody Pair - PBS only. 84575-4-PBS was coated to a plate as the capture antibody and incubated with serial dilutions of standard Eg2222. 84575-3-PBS was HRP conjugated as the detection antibody. Range: 15.6-1000 pg/mL



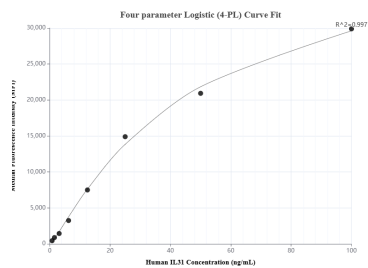
Plasma of eight individual healthy human donors was measured. The human IL31 concentration of detected samples was determined to be 15.3 pg/mL with a range of 4.8 - 32.4 pg/mL.



Serum of eight individual healthy human donors was measured. The human IL31 concentration of detected samples was determined to be 80.0 pg/mL with a range of 9.3 - 247.5 pg/mL.



Cytometric bead array standard curve of MP01421-1, IL31 Recombinant Matched Antibody Pair, PBS Only. Capture antibody: 84575-1-PBS. Detection antibody: 84575-3-PBS. Standard: Eg2222. Range: 0.781-100 ng/mL



Cytometric bead array standard curve of MP01421-2, IL31 Recombinant Matched Antibody Pair, PBS Only. Capture antibody: 84575-2-PBS. Detection antibody: 84575-3-PBS. Standard: Eg2222. Range: 0.781-100 ng/mL