

For Research Use Only

IL-15RA Recombinant antibody

Catalog Number: 84582-8-RR



Basic Information

Catalog Number: 84582-8-RR	GenBank Accession Number: BC107777	Purification Method: Protein A purification
Size: 100ul , Concentration: 1000 µg/ml by Nanodrop;	GeneID (NCBI): 3601	CloneNo.: 242689D6
Source: Rabbit	UNIPROT ID: Q13261	Recommended Dilutions: WB 1:2000-1:10000
Isotype: IgG	Full Name: interleukin 15 receptor, alpha	
	Calculated MW: 231 aa, 24 kDa	
	Observed MW: 50 kDa	

Applications

Tested Applications: WB, ELISA	Positive Controls: WB : human placenta tissue,
Species Specificity: human	

Background Information

Interleukin-15 (IL-15) is a pleiotropic cytokine that plays an important role in both innate and adaptive immunity. IL-15 is mainly produced by activated monocytes, macrophages and dendritic cells, and is structurally similar to IL-2 (PMID: 8178155; 12401478). These two cytokines share the same IL-2/15R β and common γ -chain receptor subunits. In addition, IL-2 and IL-15 have their own private α -chain receptor subunit, IL-2R α and IL-15R α , respectively (PMID: 7641685). The IL-15R α chain is expressed by many cell types including monocytes, DCs, NK, T cells and fibroblasts. Several isoforms of IL-15R α exist and are generated either by alternative splicing or by proteolytic cleavage (PMID: 10480910; 15265897). The calculated molecular weight of full-length IL-15R α is 28 kDa, IL-15R α can be glycosylated, and larger apparent molecular weights have been reported by some researches (PMID: 10480910; 15976182; 15671076; 17912462).

Storage

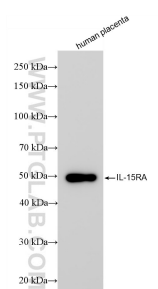
Storage:
Store at -20°C. Stable for one year after shipment.
Storage Buffer:
PBS with 0.02% sodium azide and 50% glycerol, pH7.3
Aliquoting is unnecessary for -20°C storage

*** 20ul sizes contain 0.1% BSA

For technical support and original validation data for this product please contact:
T: 1 (888) 4PTGLAB (1-888-478-4522) (toll free in USA), or 1(312) 455-8498 (outside USA)
E: proteintech@ptglab.com
W: ptglab.com

This product is exclusively available under Proteintech Group brand and is not available to purchase from any other manufacturer.

Selected Validation Data



Human placenta tissue was subjected to SDS PAGE followed by western blot with 84582-8-RR (IL15RA antibody) at dilution of 1:5000 incubated at room temperature for 1.5 hours.