

For Research Use Only

BAP31 Recombinant antibody, PBS Only

Catalog Number: 84584-5-PBS



Basic Information

Catalog Number:

84584-5-PBS

Size:

100ug, Concentration: 1 mg/ml by Nanodrop;

Source:

Rabbit

Isotype:

IgG

Immunogen Catalog Number:

AG1668

GenBank Accession Number:

BC014323

GeneID (NCBI):

10134

UNIPROT ID:

P51572

Full Name:

B-cell receptor-associated protein 31

Calculated MW:

28 kDa

Observed MW:

28 kDa

Purification Method:

Protein A purification

CloneNo.:

241978D10

Applications

Tested Applications:

WB, IHC, IF/ICC, FC (Intra), Indirect ELISA

Species Specificity:

human, mouse, rat

Background Information

BAP31, also known as BCAP31, is a chaperone protein abundant in the endoplasmic reticulum (ER). BAP31 plays a role in the export of secreted proteins in the ER, the recognition of abnormally folded proteins, and their targeting to the ER-associated-degradation (ERAD). CDIP1 and BAP31 interact upon ER stress to regulate the mitochondrial apoptosis pathway (PMID: 24139803). It also serves as a cargo receptor for the export of transmembrane proteins. BAP31 may be involved in apoptosis.

Storage

Storage:

Store at -80°C.

Storage Buffer:

PBS Only

For technical support and original validation data for this product please contact:

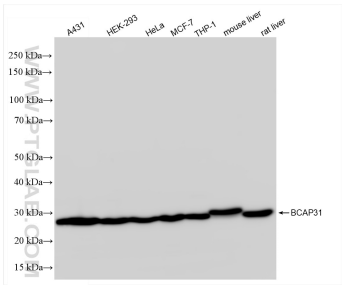
T: 1 (888) 4PTGLAB (1-888-478-4522) (toll free in USA), or 1(312) 455-8498 (outside USA)

E: proteintech@ptglab.com

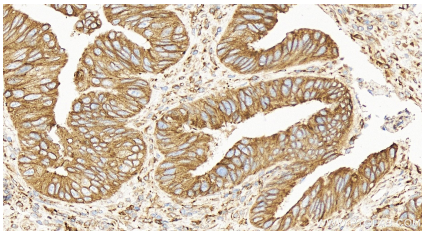
W: ptglab.com

This product is exclusively available under Proteintech Group brand and is not available to purchase from any other manufacturer.

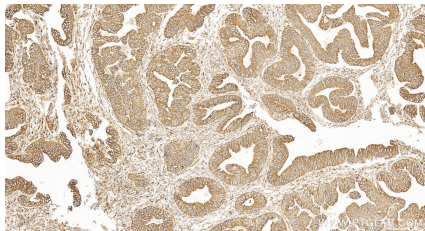
Selected Validation Data



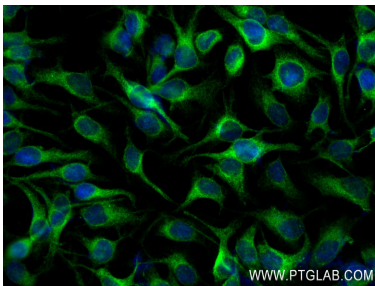
Various lysates were subjected to SDS PAGE followed by western blot with 84584-5-RR (BAP31 antibody) at dilution of 1:10000 incubated at room temperature for 1.5 hours. This data was developed using the same antibody clone with 84584-5-PBS in a different storage buffer formulation.



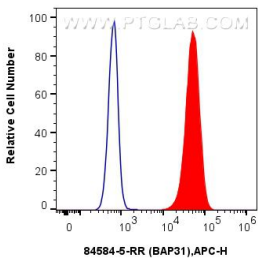
Immunohistochemical analysis of paraffin-embedded human colon cancer tissue slide using 84584-5-RR (BAP31 antibody) at dilution of 1:800 (under 40x lens). Heat mediated antigen retrieval with Tris-EDTA buffer (pH 9.0). This data was developed using the same antibody clone with 84584-5-PBS in a different storage buffer formulation.



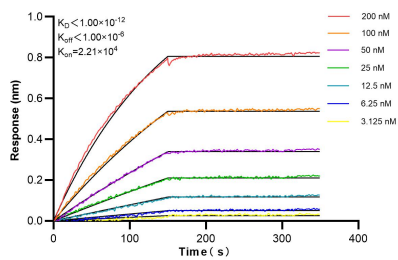
Immunohistochemical analysis of paraffin-embedded human colon cancer tissue slide using 84584-5-RR (BAP31 antibody) at dilution of 1:800 (under 10x lens). Heat mediated antigen retrieval with Tris-EDTA buffer (pH 9.0). This data was developed using the same antibody clone with 84584-5-PBS in a different storage buffer formulation.



Immunofluorescent analysis of (4% PFA) fixed HeLa cells using BAP31 antibody (84584-5-RR, Clone: 241978D10) at dilution of 1:400 and CoraLite®488-Conjugated Goat Anti-Rabbit IgG(H+L) (SA00013-2). This data was developed using the same antibody clone with 84584-5-PBS in a different storage buffer formulation.



1x10⁶ HepG2 cells were intracellularly stained with 0.25 ug BAP31 Recombinant antibody (84584-5-RR, Clone:241978D10) and APC-Conjugated Goat Anti-Rabbit IgG(H+L)(red), or 0.25 ug Rabbit IgG Isotype Control Recombinant Antibody (98136-1-RR, Clone: 240953C9) (blue). Cells were fixed with 4% PFA and permeabilized with Flow Cytometry Perm Buffer (PF00011-C). This data was developed using the same antibody clone with 84584-5-PBS in a



Bi-layer interferometry (BLI) kinetic assays of 84584-5-RR against Human BAP31 were performed. The affinity constant is below 1 pM.