

For Research Use Only

BAP31 Recombinant antibody

Catalog Number: 84584-5-RR



Basic Information

Catalog Number: 84584-5-RR	GenBank Accession Number: BC014323	Purification Method: Protein A purification
Size: 100ul , Concentration: 1000 µg/ml by Nanodrop;	GeneID (NCBI): 10134	CloneNo.: 241978D10
Source: Rabbit	UNIPROT ID: P51572	Recommended Dilutions: WB 1:5000-1:50000 IHC 1:400-1:1600 IF/ICC 1:200-1:800
Isotype: IgG	Full Name: B-cell receptor-associated protein 31	
Immunogen Catalog Number: AG1668	Calculated MW: 28 kDa	
	Observed MW: 28 kDa	

Applications

Tested Applications: WB, IHC, IF/ICC, FC (Intra), ELISA	Positive Controls:
Species Specificity: human, mouse, rat	WB : A431 cells, HEK-293 cells, HeLa cells, MCF-7 cells, THP-1 cells, mouse liver tissue, rat liver tissue
Note-IHC: suggested antigen retrieval with TE buffer pH 9.0; (*) Alternatively, antigen retrieval may be performed with citrate buffer pH 6.0	IHC : human colon cancer tissue, human placenta tissue
	IF/ICC : HeLa cells,

Background Information

BAP31, also known as BCAP31, is a chaperone protein that is abundant in the endoplasmic reticulum (ER). BAP31 plays a role in the export of secreted proteins in the ER, the recognition of abnormally folded protein, and their targeting to the ER associated-degradation (ERAD). It also serves as a cargo receptor for the export of transmembrane proteins. BAP31 may be involved in apoptosis.

Storage

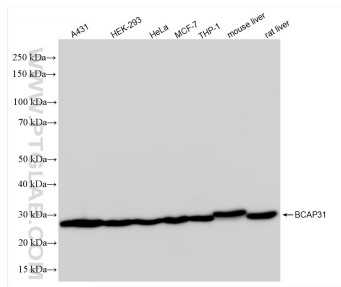
Storage:
Store at -20°C. Stable for one year after shipment.
Storage Buffer:
PBS with 0.02% sodium azide and 50% glycerol pH 7.3.
Aliquoting is unnecessary for -20°C storage

*** 20ul sizes contain 0.1% BSA

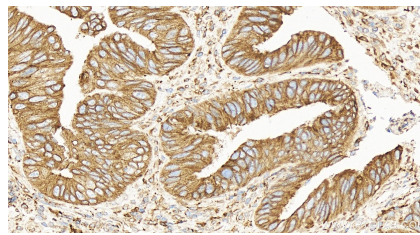
For technical support and original validation data for this product please contact:
T: 1 (888) 4PTGLAB (1-888-478-4522) (toll free in USA), or 1(312) 455-8498 (outside USA)
E: proteintech@ptglab.com
W: ptglab.com

This product is exclusively available under Proteintech Group brand and is not available to purchase from any other manufacturer.

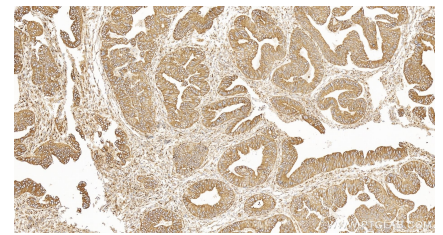
Selected Validation Data



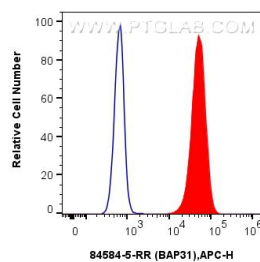
Various lysates were subjected to SDS PAGE followed by western blot with 84584-5-RR (BAP31 antibody) at dilution of 1:10000 incubated at room temperature for 1.5 hours.



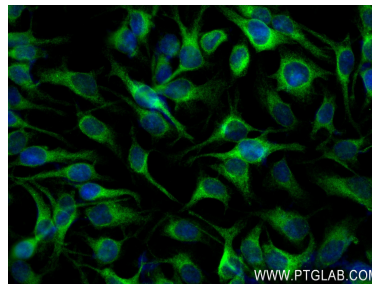
Immunohistochemical analysis of paraffin-embedded human colon cancer tissue slide using 84584-5-RR (BAP31 antibody) at dilution of 1:800 (under 40x lens). Heat mediated antigen retrieval with Tris-EDTA buffer (pH 9.0).



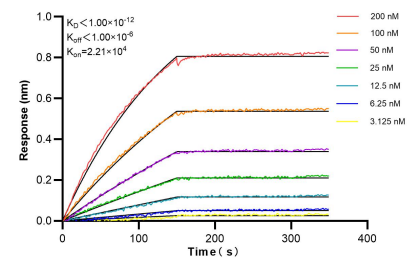
Immunohistochemical analysis of paraffin-embedded human colon cancer tissue slide using 84584-5-RR (BAP31 antibody) at dilution of 1:800 (under 10x lens). Heat mediated antigen retrieval with Tris-EDTA buffer (pH 9.0).



1x10⁶ HepG2 cells were intracellularly stained with 0.25 ug BAP31 Recombinant antibody (84584-5-RR, Clone:241978D10) and APC-Conjugated Goat Anti-Rabbit IgG(H+L)(red), or 0.25 ug Rabbit IgG Isotype Control Recombinant Antibody (98136-1-RR, Clone: 240953C9) (blue). Cells were fixed with 4% PFA and permeabilized with Flow Cytometry Perm Buffer (PF00011-C).



Immunofluorescent analysis of (4% PFA) fixed HeLa cells using BAP31 antibody (84584-5-RR, Clone: 241978D10) at dilution of 1:400 and CoraLite® 488-Conjugated Goat Anti-Rabbit IgG(H+L) (SA00013-2).



Bilayer interferometry (BLI) kinetic assays of 84584-5-RR against Human BAP31 were performed. The affinity constant is below 1 pM.