

For Research Use Only

# RHBDL2 Recombinant antibody

Catalog Number: 84589-1-RR



## Basic Information

Catalog Number:

84589-1-RR

Size:

100ul , Concentration: 1000 ug/ml by

Nanodrop;

Source:

Rabbit

Isotype:

IgG

Immunogen Catalog Number:

AG3142

GenBank Accession Number:

BC013103

GeneID (NCBI):

54933

UNIPROT ID:

Q9NX52

Full Name:

rhomboid, veinlet-like 2 (Drosophila)

Calculated MW:

303 aa, 34 kDa

Observed MW:

34-37 kDa

Purification Method:

Protein A purification

CloneNo.:

240446D11

Recommended Dilutions:

WB 1:500-1:2000

## Applications

Tested Applications:

WB, ELISA

Species Specificity:

human

Positive Controls:

WB : HEK-293 cells, MCF-7 cells, HeLa cells

## Storage

Storage:

Store at -20°C. Stable for one year after shipment.

Storage Buffer:

PBS with 0.02% sodium azide and 50% glycerol pH 7.3.

Aliquoting is unnecessary for -20°C storage

\*\*\* 20ul sizes contain 0.1% BSA

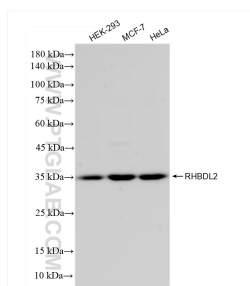
For technical support and original validation data for this product please contact:

T: 1 (888) 4PTGLAB (1-888-478-4522) (toll free  
in USA), or 1(312) 455-8498 (outside USA)

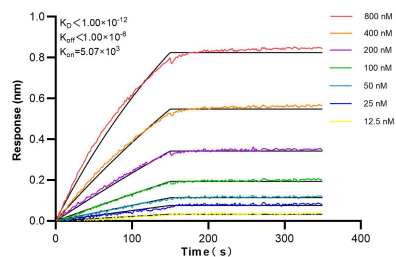
E: [proteintech@ptglab.com](mailto:proteintech@ptglab.com)  
W: [ptglab.com](http://ptglab.com)

This product is exclusively available under Proteintech Group brand and is not available to purchase from any other manufacturer.

## Selected Validation Data



Various lysates were subjected to SDS PAGE followed by western blot with 84589-1-RR (RHBDL2 antibody) at dilution of 1:1000 incubated at room temperature for 1.5 hours.



Biolayer interferometry (BLI) kinetic assays of 84589-1-RR against Human RHBDL2 were performed. The affinity constant is below 1 pM.