

For Research Use Only

Phospho-CRKL (Tyr207) Recombinant antibody, PBS Only

Catalog Number: 84590-1-PBS



Basic Information

Catalog Number:

84590-1-PBS

Size:

100ug , Concentration: 1 mg/ml by Nanodrop;

Source:

Rabbit

Isotype:

IgG

GenBank Accession Number:

BC043500

GeneID (NCBI):

1399

UNIPROT ID:

P46109

Full Name:

v-crkl sarcoma virus CT10 oncogene homolog (avian)-like

Calculated MW:

34 kDa

Observed MW:

39 kDa

Purification Method:

Protein A purification

CloneNo.:

240881B3

Applications

Tested Applications:

WB, FC (Intra), Indirect ELISA

Species Specificity:

human, mouse

Background Information

Similar to other adaptor proteins, Crk functions primarily to assemble molecular complexes to distribute signals within the cell. The best studied regulatory mechanism of Crk proteins is the phosphorylation at a tyrosine located in a linker between the N- and C-terminal SH3 domains (Tyr221 in human CrkII, Tyr207 in human CrkL). (PMID: 24675776)

Storage

Storage:

Store at -80°C.

Storage Buffer:

PBS Only

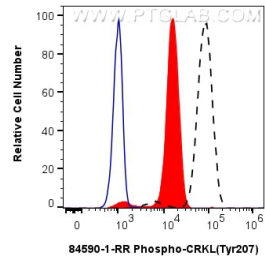
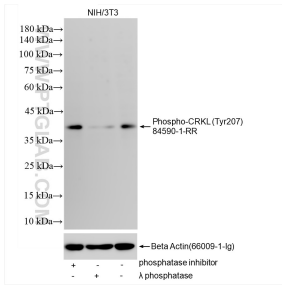
For technical support and original validation data for this product please contact:

T: 1 (888) 4PTGLAB (1-888-478-4522) (toll free in USA), or 1(312) 455-8498 (outside USA)

E: proteintech@ptglab.com
W: ptglab.com

This product is exclusively available under Proteintech Group brand and is not available to purchase from any other manufacturer.

Selected Validation Data



Non-treated NIH/3T3 cells, phosphatase inhibitor treated NIH/3T3 cells and λ phosphatase treated NIH/3T3 cells were subjected to SDS PAGE followed by western blot with 84590-1-RR (Phospho-CRKL (Tyr207) antibody) at dilution of 1:1000 incubated at room temperature for 1.5 hours. The membrane was stripped and re-blotted with Beta Actin (66009-1-Ig) antibody as a loading control. This data was developed using the same antibody clone with 84590-1-

1X10⁶ K-562 cells untreated (dashed lines) or treated with λ phosphatase which intracellularly stained with 0.06 ug Phospho-CRKL (Tyr207) Recombinant antibody (84590-1-RR, Clone:240881B3) and CoraLite® 488-Conjugated Goat Anti-Rabbit IgG(H+L) (SA00013-2)(red), or 0.06 ug Rabbit IgG Isotype Control Recombinant Antibody (98136-1-RR, Clone: 240953C9) (blue). Cells were fixed with 4% PFA and permeabilized with 90% MeOH. This data was developed