

For Research Use Only

# Phospho-CRKL (Tyr207) Recombinant antibody

Catalog Number: 84590-1-RR



## Basic Information

### Catalog Number:

84590-1-RR

### Size:

100ul, Concentration: 1000 µg/ml by Nanodrop;

### Source:

Rabbit

### Isotype:

IgG

### GenBank Accession Number:

BC043500

### GeneID (NCBI):

1399

### UNIPROT ID:

P46109

### Full Name:

v-crkl sarcoma virus CT10 oncogene homolog (avian)-like

### Calculated MW:

34 kDa

### Observed MW:

39 kDa

### Purification Method:

Protein A purification

### CloneNo.:

240881B3

### Recommended Dilutions:

WB 1:500-1:2000

## Applications

### Tested Applications:

WB, FC (Intra), ELISA

### Species Specificity:

human, mouse

### Positive Controls:

WB : NIH/3T3 cells, λ phosphatase treated NIH/3T3 cells

## Background Information

Similar to other adaptor proteins, Crk functions primarily to assemble molecular complexes to distribute signals within the cell. The best studied regulatory mechanism of Crk proteins is the phosphorylation at a tyrosine located in a linker between the N- and C-terminal SH3 domains (Tyr221 in human CrkII, Tyr207 in human CrkL). (PMID: 24675776)

## Storage

### Storage:

Store at -20°C. Stable for one year after shipment.

### Storage Buffer:

PBS with 0.02% sodium azide and 50% glycerol pH 7.3.

Aliquoting is unnecessary for -20°C storage

\*\*\* 20ul sizes contain 0.1% BSA

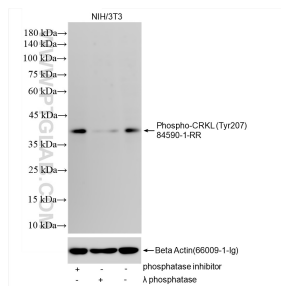
For technical support and original validation data for this product please contact:

T: 1 (888) 4PTGLAB (1-888-478-4522) (toll free in USA), or 1(312) 455-8498 (outside USA)

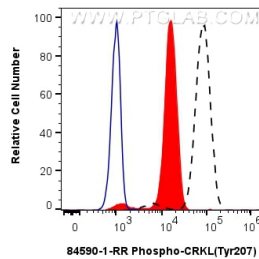
E: [proteintech@ptglab.com](mailto:proteintech@ptglab.com)  
W: [ptglab.com](http://ptglab.com)

This product is exclusively available under Proteintech Group brand and is not available to purchase from any other manufacturer.

## Selected Validation Data



Non-treated NIH/3T3 cells, phosphatase inhibitor treated NIH/3T3 cells and  $\lambda$  phosphatase treated NIH/3T3 cells were subjected to SDS PAGE followed by western blot with 84590-1-RR (Phospho-CRKL (Tyr207) antibody) at dilution of 1:1000 incubated at room temperature for 1.5 hours. The membrane was stripped and re-blotted with Beta Actin (66009-1-Ig) antibody as a loading control.



1X10<sup>6</sup> K-562 cells untreated (dashed lines) or treated with  $\lambda$  phosphatase which intracellularly stained with 0.06  $\mu$ g Phospho-CRKL (Tyr207) Recombinant antibody (84590-1-RR, Clone:240881B3) and CoraLite®488-Conjugated Goat Anti-Rabbit IgG(H+L) (SA00013-2)(red), or 0.06  $\mu$ g Rabbit IgG Isotype Control Recombinant Antibody (98136-1-RR, Clone: 240953C9) (blue). Cells were fixed with 4% PFA and permeabilized with 90% MeOH.