

For Research Use Only

Phospho-CrkL (Tyr207) Recombinant antibody

Catalog Number: 84590-2-RR



Basic Information

Catalog Number:

84590-2-RR

Size:

100ul, Concentration: 1000 µg/ml by Nanodrop;

Source:

Rabbit

Isotype:

IgG

GenBank Accession Number:

BC043500

GeneID (NCBI):

1399

UNIPROT ID:

P46109

Full Name:

v-crk sarcoma virus CT10 oncogene homolog (avian)-like

Calculated MW:

34 kDa

Purification Method:

Protein A purification

CloneNo.:

240881A2

Recommended Dilutions:

WB 1:500-1:2000

Applications

Tested Applications:

WB, ELISA

Species Specificity:

human, mouse

Positive Controls:

WB : NIH/3T3 cells, Blocked Phosphorylated peptide treated NIH/3T3 cells

Background Information

CrkL (v-crk avian sarcoma virus CT10 oncogene homolog-like) is a cytoplasmic adaptor protein that belongs to the Crk family of adaptors. Similar to other adaptor proteins, Crk functions primarily to assemble molecular complexes to distribute signals within the cell. The best studied regulatory mechanism of Crk proteins is the phosphorylation at a tyrosine located in a linker between the N- and C-terminal SH3 domains (Tyr221 in human CrkII, Tyr207 in human CrkL). (PMID: 24675776)

Storage

Storage:

Store at -20°C. Stable for one year after shipment.

Storage Buffer:

PBS with 0.02% sodium azide and 50% glycerol, pH7.3

Aliquoting is unnecessary for -20°C storage

*** 20ul sizes contain 0.1% BSA

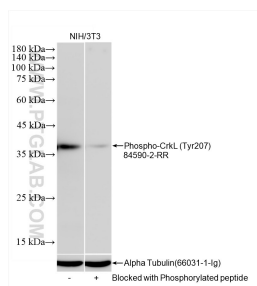
For technical support and original validation data for this product please contact:

T: 1 (888) 4PTGLAB (1-888-478-4522) (toll free in USA), or 1(312) 455-8498 (outside USA)

E: proteintech@ptglab.com
W: ptglab.com

This product is exclusively available under Proteintech Group brand and is not available to purchase from any other manufacturer.

Selected Validation Data



Non-treated NIH/3T3 cells and Blocked Phosphorylated peptide treated NIH/3T3 cells were subjected to SDS PAGE followed by western blot with 84590-2-RR (Phospho-CrkL (Tyr207) antibody) at dilution of 1:1000 incubated at room temperature for 1.5 hours. The membrane was stripped and re-blotted with Alpha Tubulin (66031-1-Ig) antibody as a loading control.