

For Research Use Only

CXCR6 Recombinant antibody

Catalog Number: 84591-1-RR



Basic Information

Catalog Number: 84591-1-RR	GenBank Accession Number: BC033584	Purification Method: Protein A purification
Size: 100ul , Concentration: 1000 µg/ml by Nanodrop;	GeneID (NCBI): 10663	CloneNo.: 241662E5
Source: Rabbit	UNIPROT ID: O00574	Recommended Dilutions: WB 1:500-1:2000 IHC 1:50-1:500 IF/ICC 1:50-1:500
Isotype: IgG	Full Name: chemokine (C-X-C motif) receptor 6	
	Calculated MW: 39 kDa	
	Observed MW: 45 kDa	

Applications

Tested Applications:
WB, IHC, IF/ICC, ELISA

Species Specificity:
human

Note-IHC: suggested antigen retrieval with TE buffer pH 9.0; (*) Alternatively, antigen retrieval may be performed with citrate buffer pH 6.0

Positive Controls:

WB : HEK-293 cells, DU 145 cells, A549 cells, mouse colon tissue

IHC : mouse brain tissue,

IF/ICC : human lung cancer tissue,

Background Information

CXCR6, or C-X-C chemokine receptor 6, is a G protein-coupled receptor with seven transmembrane domains that belong to the CXCR chemokine receptor family. This family also includes CXCR1, CXCR2, CXCR3, CXCR4, CXCR5, and CXCR7. CXCR6 is expressed in several T lymphocyte subsets and bone marrow stromal cells. The encoded protein and its exclusive ligand, chemokine ligand 16 (CCL16), are part of a signaling pathway that regulates T lymphocyte migration to various peripheral tissues such as the liver, spleen red pulp, intestine, lungs, and skin. CXCR6 plays a crucial role in immunosurveillance through its interaction with epithelial cells and certain subpopulations of intratumor dendritic cells (DC), particularly DC3, which express CXCL16 at the membrane.

Storage

Storage:

Store at -20°C. Stable for one year after shipment.

Storage Buffer:

PBS with 0.02% sodium azide and 50% glycerol pH 7.3.

Aliquoting is unnecessary for -20°C storage

*** 20ul sizes contain 0.1% BSA

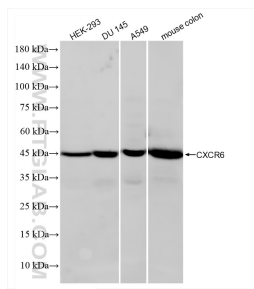
For technical support and original validation data for this product please contact:

T: 1 (888) 4PTGLAB (1-888-478-4522) (toll free in USA), or 1(312) 455-8498 (outside USA)

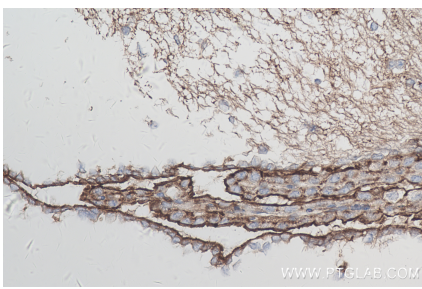
E: proteintech@ptglab.com
W: ptglab.com

This product is exclusively available under Proteintech Group brand and is not available to purchase from any other manufacturer.

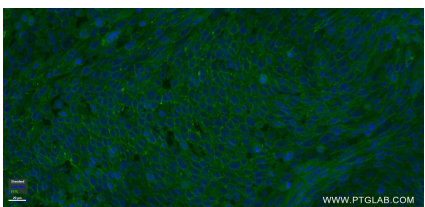
Selected Validation Data



Various lysates were subjected to SDS PAGE followed by western blot with 84591-1-RR (CXCR6 antibody) at dilution of 1:1000 incubated at room temperature for 1.5 hours.



Immunohistochemical analysis of paraffin-embedded mouse brain tissue slide using 84591-1-RR (CXCR6 antibody) at dilution of 1:200 (under 40x lens). Heat mediated antigen retrieval with Tris-EDTA buffer (pH 9.0).



Immunofluorescent analysis of un-fixed human lung cancer tissue using CXCR6 antibody (84591-1-RR, Clone: 241662E5) at dilution of 1:200 and Multi-rAb CoraLite ® Plus 488-Goat Anti-Rabbit Recombinant Secondary Antibody (H+L) (RGAR002).