

For Research Use Only

CD164 Recombinant antibody, PBS Only (Detector)

Catalog Number: 84598-5-PBS



Basic Information

Catalog Number: 84598-5-PBS	GenBank Accession Number: NM_006016.6	Purification Method: Protein A purification
Size: 100ug , Concentration: 1 mg/ml by Nanodrop;	GeneID (NCBI): 8763	CloneNo.: 241950F1
Source: Rabbit	UNIPROT ID: Q04900-1	
Isotype: IgG	Full Name: CD164 molecule, sialomucin	
	Calculated MW: 21kDa	

Applications

Tested Applications:
Sandwich ELISA, Indirect ELISA, Sample test

Species Specificity:
human

Product Information

84598-5-PBS targets CD164 as part of a matched antibody pair:

MP01444-3: 84598-6-PBS capture and 84598-5-PBS detection (validated in Sandwich ELISA)

Unconjugated rabbit recombinant monoclonal antibody in PBS only (BSA and azide free) storage buffer at a concentration of 1 mg/mL, ready for conjugation. Created using Proteintech's proprietary in-house recombinant technology. Recombinant production enables unrivalled batch-to-batch consistency, easy scale-up, and future security of supply.

This conjugation ready format makes antibodies ideal for use in many applications including: ELISAs, multiplex assays requiring matched pairs, mass cytometry, and multiplex imaging applications. Antibody use should be optimized by the end user for each application and assay.

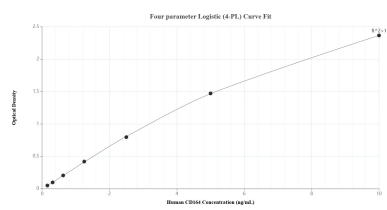
Storage

Storage:
Store at -80°C.
Storage Buffer:
PBS Only

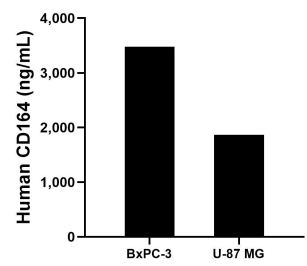
For technical support and original validation data for this product please contact:
T: 1 (888) 4PTGLAB (1-888-478-4522) (toll free in USA), or 1(312) 455-8498 (outside USA)
E: proteintech@ptglab.com
W: ptglab.com

This product is exclusively available under Proteintech Group brand and is not available to purchase from any other manufacturer.

Selected Validation Data



Sandwich ELISA standard curve of MP01444-3, Human CD164 Recombinant Matched Antibody Pair - PBS only. 84598-6-PBS was coated to a plate as the capture antibody and incubated with serial dilutions of standard Eg1690. 84598-5-PBS was HRP conjugated as the detection antibody. Range: 0.156-10 ng/mL



The mean CD164 concentration was determined to be 3,475.14 ng/mL in BxPC-3 cell extract based on a 5.40 mg/mL extract load and 1,866.96 ng/mL in U-87 MG cell extract based on a 1.00 mg/mL extract load.