

For Research Use Only

TIM-1 Recombinant antibody

Catalog Number: 84600-5-RR



Basic Information

Catalog Number: 84600-5-RR	GenBank Accession Number: NM_001173393.3	Purification Method: Protein A purification
Size: 100ul , Concentration: 1000 µg/ml by Nanodrop;	GeneID (NCBI): 26762	CloneNo.: 242001D1
Source: Rabbit	UNIPROT ID: Q96D42	Recommended Dilutions: WB 1:1000-1:6000
Isotype: IgG	Full Name: hepatitis A virus cellular receptor 1	
	Calculated MW: 39kDa	
	Observed MW: 100 kDa	

Applications

Tested Applications: WB, ELISA	Positive Controls: WB : HuH-7 cells,
Species Specificity: human	

Background Information

TIM-1, also known as kidney injury molecule (KIM-1), was first identified as a marker of acute kidney injury. TIM-1 mRNA and protein dramatically increase after ischemic kidney injury while there are low levels in normal kidneys. In addition, TIM-1 is expressed on CD4+ T cells after activation and its expression was sustained preferentially in Th2 but not Th1 cells. However, TIM-1 is expressed on both Th1 and Th2 cells and TIM-1 blockade prolongs survival of fully MHC-mismatched cardiac transplants. TIM-4, expressed by macrophages, is the ligand for TIM-1, and TIM-1 - TIM-4 interactions regulate Th cell responses and modulate Th1/Th2 cytokine balance. Moreover, TIM-1 can regulate macrophage activation and alter the co-stimulatory properties of macrophages. (PMID: 20091883)

Storage

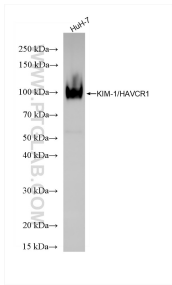
Storage:
Store at -20°C. Stable for one year after shipment.
Storage Buffer:
PBS with 0.02% sodium azide and 50% glycerol pH 7.3.
Aliquoting is unnecessary for -20°C storage

*** 20ul sizes contain 0.1% BSA

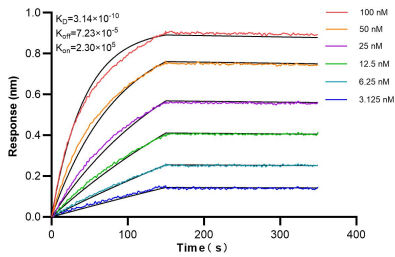
For technical support and original validation data for this product please contact:
T: 1 (888) 4PTGLAB (1-888-478-4522) (toll free in USA), or 1(312) 455-8498 (outside USA)
E: proteintech@ptglab.com
W: ptglab.com

This product is exclusively available under Proteintech Group brand and is not available to purchase from any other manufacturer.

Selected Validation Data



HuH-7 cells were subjected to SDS PAGE followed by western blot with 84600-5-RR (TIM-1 antibody) at dilution of 1:3000 incubated at room temperature for 1.5 hours.



Biolayer interferometry (BLI) kinetic assays of 84600-5-RR against Human TIM-1 were performed. The affinity constant is 0.314 nM.