

For Research Use Only

Pregnancy Zone Protein Recombinant antibody, PBS Only

Catalog Number: 84605-4-PBS



Basic Information

Catalog Number:

84605-4-PBS

Size:

100ug, Concentration: 1 mg/ml by Nanodrop;

Source:

Rabbit

Isotype:

IgG

Immunogen Catalog Number:

AG16471

GenBank Accession Number:

BC111756

GeneID (NCBI):

5858

UNIPROT ID:

P20742

Full Name:

pregnancy-zone protein

Calculated MW:

1482 aa, 164 kDa

Observed MW:

180 kDa

Purification Method:

Protein A purification

CloneNo.:

242114A6

Applications

Tested Applications:

WB, Indirect ELISA

Species Specificity:

human

Background Information

Pregnancy Zone Protein (PZP) is an immunosuppressive protein that is expressed by the placenta. The PZP is a thiol ester-containing alpha macroglobulin protein that controls the proteolytic pathways during pregnancy and contributes to maintaining the immunologically privileged status of the fetus. Recently PZP over-expression has been described as a novel biomarker for predicting the prognosis of hepatocellular carcinoma and its high expression has been reported in solid tumors.

Storage

Storage:

Store at -80°C.

Storage Buffer:

PBS Only

For technical support and original validation data for this product please contact:

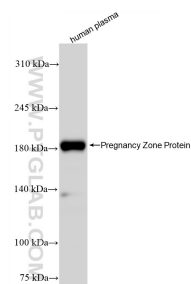
T: 1 (888) 4PTGLAB (1-888-478-4522) (toll free in USA), or 1(312) 455-8498 (outside USA)

E: proteintech@ptglab.com

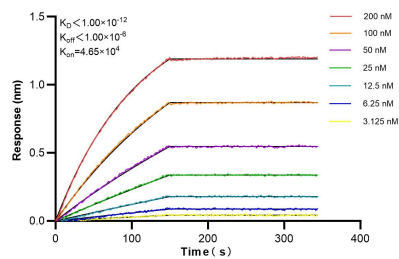
W: ptglab.com

This product is exclusively available under Proteintech Group brand and is not available to purchase from any other manufacturer.

Selected Validation Data



human plasma were subjected to SDS PAGE followed by western blot with 84605-4-RR (Pregnancy Zone Protein antibody) at dilution of 1:10000 incubated at room temperature for 1.5 hours. This data was developed using the same antibody clone with 84605-4-PBS in a different storage buffer formulation.



Biolayer interferometry (BLI) kinetic assays of 84605-4-RR against Human Pregnancy Zone Protein were performed. The affinity constant is below 1 pM.