

For Research Use Only

Pregnancy Zone Protein Recombinant antibody

Catalog Number: 84605-4-RR



Basic Information

Catalog Number: 84605-4-RR	GenBank Accession Number: BC111756	Purification Method: Protein A purification
Size: 100ul , Concentration: 1000 ug/ml by Nanodrop;	GeneID (NCBI): 5858	CloneNo.: 242114A6
Source: Rabbit	UNIPROT ID: P20742	Recommended Dilutions: WB 1:5000-1:50000
Isotype: IgG	Full Name: pregnancy-zone protein	
Immunogen Catalog Number: AG16471	Calculated MW: 1482 aa, 164 kDa	
	Observed MW: 180 kDa	

Applications

Tested Applications: WB, ELISA	Positive Controls: WB : human plasma,
Species Specificity: human	

Background Information

Pregnancy Zone Protein (PZP) is an immunosuppressive protein that is expressed by the placenta. The PZP is a thiol ester-containing alpha macroglobulin protein that controls the proteolytic pathways during pregnancy and contributes to maintaining the immunologically privileged status of the fetus. Recently PZP over-expression has been described as a novel biomarker for predicting the prognosis of hepatocellular carcinoma and its high expression has been reported in solid tumors.

Storage

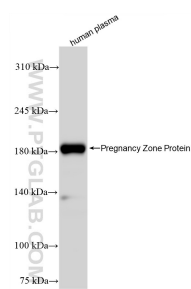
Storage:
Store at -20°C. Stable for one year after shipment.
Storage Buffer:
PBS with 0.02% sodium azide and 50% glycerol pH 7.3.
Aliquoting is unnecessary for -20°C storage

*** 20ul sizes contain 0.1% BSA

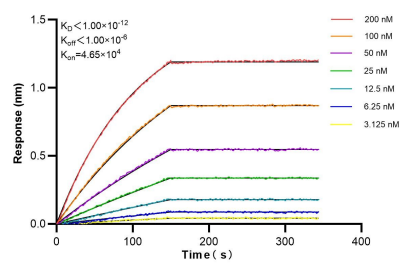
For technical support and original validation data for this product please contact:
T: 1 (888) 4PTGLAB (1-888-478-4522) (toll free in USA), or 1(312) 455-8498 (outside USA)
E: proteintech@ptglab.com
W: ptglab.com

This product is exclusively available under Proteintech Group brand and is not available to purchase from any other manufacturer.

Selected Validation Data



human plasma were subjected to SDS PAGE followed by western blot with 84605-4-RR (Pregnancy Zone Protein antibody) at dilution of 1:10000 incubated at room temperature for 1.5 hours.



Biolayer interferometry (BLI) kinetic assays of 84605-4-RR against Human Pregnancy Zone Protein were performed. The affinity constant is below 1 pM.