

For Research Use Only

DPP4/CD26 Recombinant antibody, PBS Only (Capture)

Catalog Number: 84606-5-PBS



Basic Information

Catalog Number: 84606-5-PBS	GenBank Accession Number: BC013329	Purification Method: Protein A purification
Size: 100ug , Concentration: 1 mg/ml by Nanodrop;	GeneID (NCBI): 1803	CloneNo.: 242045D10
Source: Rabbit	UNIPROT ID: P27487	
Isotype: IgG	Full Name: dipeptidyl-peptidase 4	
	Calculated MW: 88 kDa	

Applications

Tested Applications:
Sandwich ELISA, Indirect ELISA, Sample test

Species Specificity:
human

Product Information

84606-5-PBS targets DPP4/CD26 as part of a matched antibody pair:

MP01439-3: 84606-5-PBS capture and 84606-4-PBS detection (validated in Sandwich ELISA)

Unconjugated rabbit recombinant monoclonal antibody in PBS only (BSA and azide free) storage buffer at a concentration of 1 mg/mL, ready for conjugation. Created using Proteintech's proprietary in-house recombinant technology. Recombinant production enables unrivalled batch-to-batch consistency, easy scale-up, and future security of supply.

This conjugation ready format makes antibodies ideal for use in many applications including: ELISAs, multiplex assays requiring matched pairs, mass cytometry, and multiplex imaging applications. Antibody use should be optimized by the end user for each application and assay.

Storage

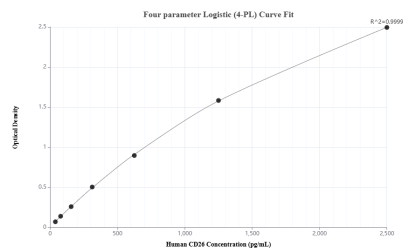
Storage:
Store at -80°C.

Storage Buffer:
PBS Only

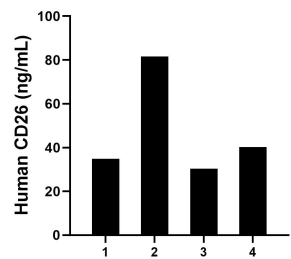
For technical support and original validation data for this product please contact:
T: 1 (888) 4PTGLAB (1-888-478-4522) (toll free in USA), or 1(312) 455-8498 (outside USA)
E: proteintech@ptglab.com
W: ptglab.com

This product is exclusively available under Proteintech Group brand and is not available to purchase from any other manufacturer.

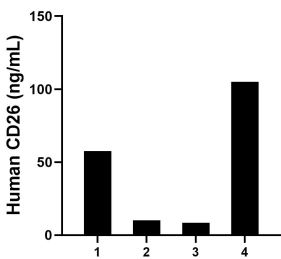
Selected Validation Data



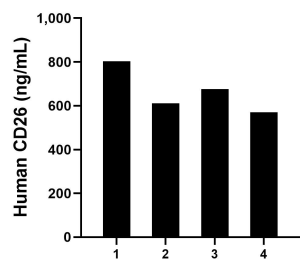
Sandwich ELISA standard curve of MP01439-3, Human DPP4/CD26 Recombinant Matched Antibody Pair - PBS only. 84606-5-PBS was coated to a plate as the capture antibody and incubated with serial dilutions of standard Eg0157. 84606-4-PBS was HRP conjugated as the detection antibody. Range: 39.1-2500 pg/mL



Saliva of four individual healthy human donors was measured. The human DPP4/CD26 concentration of detected samples was determined to be 46.73 ng/mL with a range of 30.36 - 81.55 ng/mL



Urine of four individual healthy human donors was measured. The human DPP4/CD26 concentration of detected samples was determined to be 45.25 ng/mL with a range of 8.4 - 104.93 ng/mL



Serum of four individual healthy human donors was measured. The human DPP4/CD26 concentration of detected samples was determined to be 665.25 ng/mL with a range of 570.16 - 803.43 ng/mL