

For Research Use Only

DPP4/CD26 Recombinant antibody, PBS Only

Catalog Number: 84606-6-PBS



Basic Information

Catalog Number: 84606-6-PBS	GenBank Accession Number: BC013329	Purification Method: Protein A purification
Size: 100ug , Concentration: 1 mg/ml by Nanodrop;	GeneID (NCBI): 1803	CloneNo.: 242045F5
Source: Rabbit	UNIPROT ID: P27487	
Isotype: IgG	Full Name: dipeptidyl-peptidase 4	
	Calculated MW: 88 kDa	
	Observed MW: 110 kDa	

Applications

Tested Applications:
WB, IF/ICC, Indirect ELISA

Species Specificity:
human

Background Information

CD26, also known as DPP4 (dipeptidyl peptidase-4), is a 110 kDa type II cell-surface glycoprotein widely expressed on T cells, activated B cells, activated NK cells and myeloid cells as well as on epithelial cells, fibroblasts, mesothelium, and endothelial cells of a variety of tissues (PMID:33777580; 26919392). It has ecto-enzyme activity in its extracellular domain and cleaves amino-terminal dipeptides with either L-proline or L-alanine at the penultimate position (PMID: 9553764). CD26 plays roles in diverse biological processes such as immunoregulation, glucose homeostasis, and tumorigenesis (PMID: 33777580).

Storage

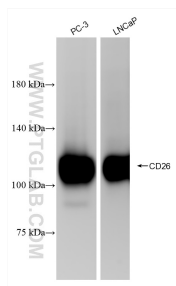
Storage:
Store at -80°C.

Storage Buffer:
PBS Only

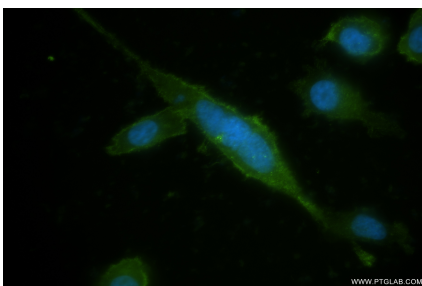
For technical support and original validation data for this product please contact:
T: 1 (888) 4PTGLAB (1-888-478-4522) (toll free in USA), or 1(312) 455-8498 (outside USA)
E: proteintech@ptglab.com
W: ptglab.com

This product is exclusively available under Proteintech Group brand and is not available to purchase from any other manufacturer.

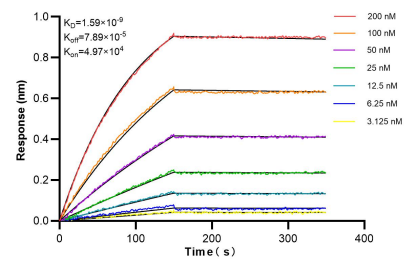
Selected Validation Data



Various lysates were subjected to SDS PAGE followed by western blot with 84606-6-RR (DPP4/CD26 antibody) at dilution of 1:10000 incubated at room temperature for 1.5 hours. This data was developed using the same antibody clone with 84606-6-PBS in a different storage buffer formulation.



Immunofluorescent analysis of (4% PFA) fixed PC-3 cells using DPP4/CD26 antibody (84606-6-RR, Clone: 242045F5) at dilution of 1:200 and CoraLite® 488-Conjugated Goat Anti-Rabbit IgG(H+L) (SA00013-2). This data was developed using the same antibody clone with 84606-6-PBS in a different storage buffer formulation.



Biolayer interferometry (BLI) kinetic assays of 84606-6-RR against Human DPP4/CD26 were performed. The affinity constant is 1.59 nM.