

For Research Use Only

Mouse CD31/PECAM-1 Recombinant antibody, PBS Only (Capture)

Catalog Number: 84607-1-PBS



Basic Information

Catalog Number: 84607-1-PBS	GenBank Accession Number: NM_001305157.1	Purification Method: Protein A purification
Size: 100ug , Concentration: 1 mg/ml by Nanodrop;	GeneID (NCBI): 18613	CloneNo.: 242041D6
Source: Rabbit	UNIPROT ID: Q08481-1	
Isotype: IgG	Full Name: platelet/endothelial cell adhesion molecule 1	
Immunogen Catalog Number: EG0846	Calculated MW: 81 kDa	

Applications

Tested Applications:
Cytometric bead array, Sandwich ELISA, Indirect ELISA, Sample test

Species Specificity:
mouse

Product Information

84607-1-PBS targets CD31/PECAM-1 as part of a matched antibody pair:

MP01441-1: 84607-1-PBS capture and 84607-2-PBS detection (validated in Cytometric bead array)

MP01441-2: 84607-1-PBS capture and 84607-3-PBS detection (validated in Cytometric bead array, Sandwich ELISA)

Unconjugated rabbit recombinant monoclonal antibody in PBS only (BSA and azide free) storage buffer at a concentration of 1 mg/mL, ready for conjugation. Created using Proteintech's proprietary in-house recombinant technology. Recombinant production enables unrivalled batch-to-batch consistency, easy scale-up, and future security of supply.

This conjugation ready format makes antibodies ideal for use in many applications including: ELISAs, multiplex assays requiring matched pairs, mass cytometry, and multiplex imaging applications. Antibody use should be optimized by the end user for each application and assay.

Storage

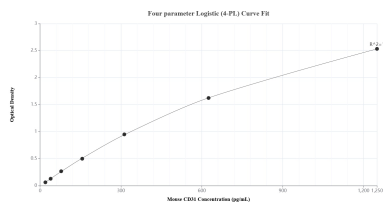
Storage:
Store at -80°C.

Storage Buffer:
PBS only, pH7.3

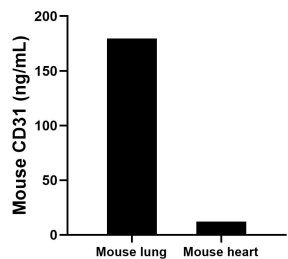
For technical support and original validation data for this product please contact:
T: 1 (888) 4PTGLAB (1-888-478-4522) (toll free in USA), or 1(312) 455-8498 (outside USA)
E: proteintech@ptglab.com
W: ptglab.com

This product is exclusively available under Proteintech Group brand and is not available to purchase from any other manufacturer.

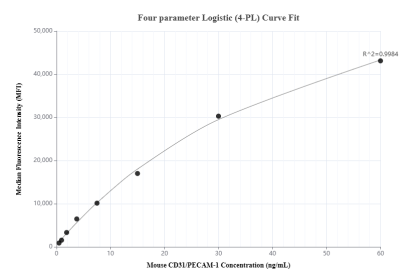
Selected Validation Data



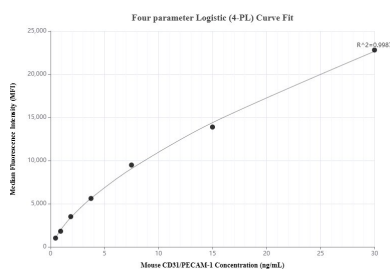
Sandwich ELISA standard curve of MP01441-2, Mouse CD31 Recombinant Matched Antibody Pair - PBS only. 84607-1-PBS was coated to a plate as the capture antibody and incubated with serial dilutions of standard Eg0846. 84607-3-PBS was HRP conjugated as the detection antibody. Range: 19.5-1250 pg/mL.



The mean CD31 concentration was determined to be 179.5 ng/mL in mouse lung tissue extract based on a 1.6 mg/mL extract load and 12.0 ng/mL in mouse heart tissue extract based on a 1.2 mg/mL extract load.



Cytometric bead array standard curve of MP01441-1, MOUSE CD31 Recombinant Matched Antibody Pair, PBS Only. Capture antibody: 84607-1-PBS. Detection antibody: 84607-2-PBS. Standard: Eg0846. Range: 0.469-60 ng/mL.



Cytometric bead array standard curve of MP01441-2, MOUSE CD31 Recombinant Matched Antibody Pair, PBS Only. Capture antibody: 84607-1-PBS. Detection antibody: 84607-3-PBS. Standard: Eg0846. Range: 0.469-30 ng/mL.