

For Research Use Only

Mouse CD31 Recombinant antibody, PBS Only

Catalog Number: 84607-4-PBS



Basic Information

Catalog Number:

84607-4-PBS

Size:

100ug, Concentration: 1 mg/ml by
Nanodrop;

Source:

Rabbit

Isotype:

IgG

GenBank Accession Number:

NM_001305157.1

GeneID (NCBI):

18613

UNIPROT ID:

Q08481-1

Full Name:

platelet/endothelial cell adhesion
molecule 1

Calculated MW:

81 kDa

Observed MW:

100-130 kDa

Purification Method:

Protein A purification

CloneNo.:

242041E12

Applications

Tested Applications:

WB, IF/ICC, Indirect ELISA

Species Specificity:

mouse

Background Information

Platelet endothelial cell adhesion molecule-1 (PECAM-1, CD31) is a member of the immunoglobulin gene superfamily of cell adhesion molecules. CD31 is a transmembrane glycoprotein that is highly expressed on the surface of the endothelium, making up a large portion of its intracellular junctions. PECAM-1 is also present on the surface of hematopoietic cells and immune cells including platelets, monocytes, neutrophils, natural killer cells, megakaryocytes and some types of T-cell (PMID: 9011572). As well as its role in cell-cell adhesion, PECAM-1 functions as a signaling receptor, and is involved in important physiological events such as nitric oxide production, regulation of T-cell immunity and tolerance, leukocyte transendothelial migration and inflammation and angiogenesis (PMID: 21183735; 20978210; 17872453; 20634489).

Storage

Storage:

Store at -80°C.

Storage Buffer:

PBS Only

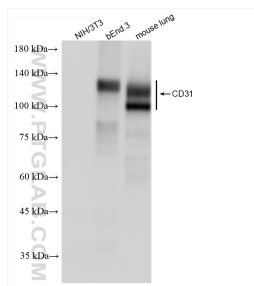
For technical support and original validation data for this product please contact:

T: 1 (888) 4PTGLAB (1-888-478-4522) (toll free
in USA), or 1(312) 455-8498 (outside USA)

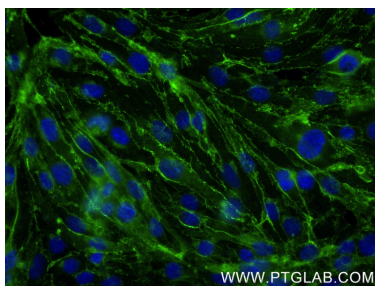
E: proteintech@ptglab.com
W: ptglab.com

This product is exclusively available under Proteintech Group brand and is not available to purchase from any other manufacturer.

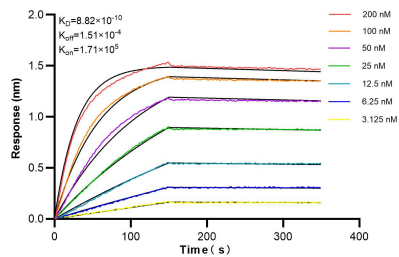
Selected Validation Data



Various lysates were subjected to SDS PAGE followed by western blot with 84607-4-RR (CD31 antibody) at dilution of 1:1000 incubated at room temperature for 1.5 hours. This data was developed using the same antibody clone with 84607-4-PBS in a different storage buffer formulation.



Immunofluorescent analysis of (4% PFA) fixed bEnd.3 cells using CD31/PECAM-1 antibody (84607-4-RR, Clone: 242041E12) at dilution of 1:400 and CoraLite®488-Conjugated Goat Anti-Rabbit IgG(H+L) (SA00013-2). This data was developed using the same antibody clone with 84607-4-PBS in a different storage buffer formulation.



Biolayer interferometry (BLI) kinetic assays of 84607-4-RR against Mouse CD31 were performed. The affinity constant is 0.882 nM.