

For Research Use Only

EMR2 Recombinant antibody

Catalog Number: 84608-5-RR



Basic Information

Catalog Number: 84608-5-RR	GenBank Accession Number: NM_013447.3	Purification Method: Protein A purification
Size: 100ul , Concentration: 1000 µg/ml by Nanodrop;	GeneID (NCBI): 30817	CloneNo.: 242042E3
Source: Rabbit	UNIPROT ID: Q9UHX3-1	Recommended Dilutions: WB 1:2000-1:10000
Isotype: IgG	Full Name: egf-like module containing, mucin-like, hormone receptor-like 2	
	Calculated MW: 90 kDa	
	Observed MW: 75-90 kDa	

Applications

Tested Applications: WB, ELISA	Positive Controls: WB : HeLa cells, THP-1 cells, LO2 cells
Species Specificity: human	

Background Information

EMR2 (Epidermal Growth Factor-like module-containing Mucin-like Hormone Receptor 2), also known as ADGRE2, is a member of the adhesion-GPCR family that contains extracellular EGF-like domains. EMR2 contains a total of five tandem EGF-like domains and expresses similar protein isoforms consisting of various numbers of EGF-like domains as a result of alternative RNA splicing (PMID: 10903844). EMR2 is restricted to myeloid cells including monocytes, macrophages, dendritic cells and granulocytes²⁸ and its expression is highly regulated during monocyte/macrophage differentiation (PMID: 31969668). The ligation of EMR2 could increase neutrophil adhesion, migration and anti-microbial mediator production and could enhance the systemic inflammation (PMID: 27905560).

Storage

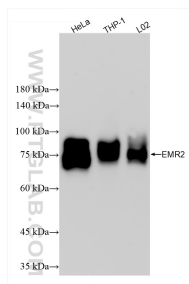
Storage:
Store at -20°C. Stable for one year after shipment.
Storage Buffer:
PBS with 0.02% sodium azide and 50% glycerol pH 7.3.
Aliquoting is unnecessary for -20°C storage

*** 20ul sizes contain 0.1% BSA

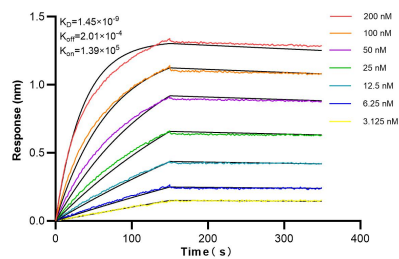
For technical support and original validation data for this product please contact:
T: 1 (888) 4PTGLAB (1-888-478-4522) (toll free in USA), or 1(312) 455-8498 (outside USA)
E: proteintech@ptglab.com
W: ptglab.com

This product is exclusively available under Proteintech Group brand and is not available to purchase from any other manufacturer.

Selected Validation Data



Various lysates were subjected to SDS PAGE followed by western blot with 84608-5-RR (EMR2 antibody) at dilution of 1:5000 incubated at room temperature for 1.5 hours.



Biolayer interferometry (BLI) kinetic assays of 84608-5-RR against Human EMR2 were performed. The affinity constant is 1.45 nM.