

For Research Use Only

# INTS6 Recombinant antibody, PBS Only (Capture)

Catalog Number: 84610-3-PBS



## Basic Information

<b>Catalog Number:</b> 84610-3-PBS	<b>GenBank Accession Number:</b> BC039829	<b>Purification Method:</b> Protein A purification
<b>Size:</b> 100ug , Concentration: 1 mg/ml by Nanodrop;	<b>GeneID (NCBI):</b> 26512	<b>CloneNo.:</b> 242099E6
<b>Source:</b> Rabbit	<b>UNIPROT ID:</b> Q9UL03	
<b>Isotype:</b> IgG	<b>Full Name:</b> integrator complex subunit 6	
<b>Immunogen Catalog Number:</b> AG36146	<b>Calculated MW:</b> 100 kDa	

## Applications

**Tested Applications:**  
IHC, IF/ICC, FC (Intra), Cytometric bead array, Sandwich ELISA, Indirect ELISA, Sample test

**Species Specificity:**  
human, mouse

## Product Information

84610-3-PBS targets INTS6 as part of a matched antibody pair:

MP01446-1: 84610-3-PBS capture and 84610-1-PBS detection (validated in Cytometric bead array, Sandwich ELISA)

MP01446-2: 84610-3-PBS capture and 84610-2-PBS detection (validated in Cytometric bead array)

Unconjugated rabbit recombinant monoclonal antibody in PBS only (BSA and azide free) storage buffer at a concentration of 1 mg/mL, ready for conjugation. Created using Proteintech's proprietary in-house recombinant technology. Recombinant production enables unrivalled batch-to-batch consistency, easy scale-up, and future security of supply.

This conjugation ready format makes antibodies ideal for use in many applications including: ELISAs, multiplex assays requiring matched pairs, mass cytometry, and multiplex imaging applications. Antibody use should be optimized by the end user for each application and assay.

## Background Information

INTS6 is a component of the Integrator (INT) complex, a complex involved in the small nuclear RNAs (snRNA) U1 and U2 transcription and in their 3'-box-dependent processing.

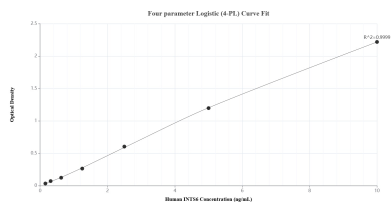
## Storage

**Storage:**  
Store at -80°C.  
**Storage Buffer:**  
PBS Only

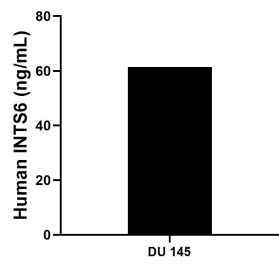
For technical support and original validation data for this product please contact:  
T: 1 (888) 4PTGLAB (1-888-478-4522) (toll free in USA), or 1(312) 455-8498 (outside USA)  
E: [proteintech@ptglab.com](mailto:proteintech@ptglab.com)  
W: [ptglab.com](http://ptglab.com)

This product is exclusively available under Proteintech Group brand and is not available to purchase from any other manufacturer.

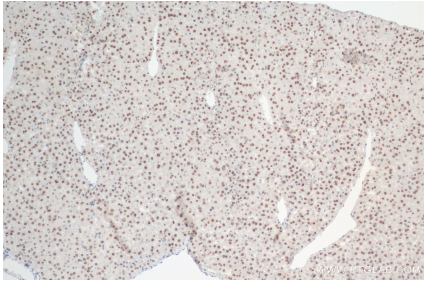
Selected Validation Data



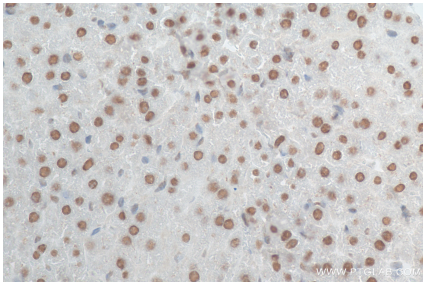
Sandwich ELISA standard curve of MP01446-1, Human INTS6 Recombinant Matched Antibody Pair - PBS only. 84610-3-PBS was coated to a plate as the capture antibody and incubated with serial dilutions of standard Ag36146. 84610-1-PBS was HRP conjugated as the detection antibody. Range: 0.156-10 ng/mL



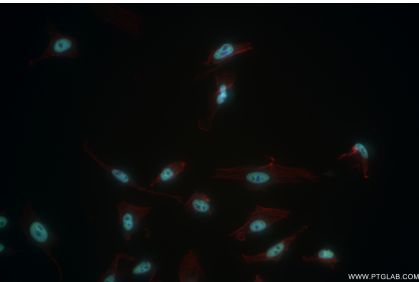
The mean INTS6 concentration was determined to be 61.44 ng/mL in DU 145 cell extract based on a 1.00 mg/mL extract load.



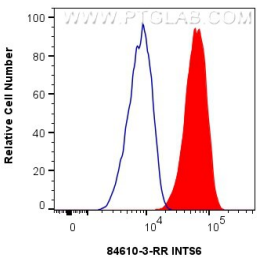
Immunohistochemical analysis of paraffin-embedded mouse liver tissue slide using 84610-3-RR (INTS6 antibody) at dilution of 1:1000 (under 10x lens). Heat mediated antigen retrieval with Tris-EDTA buffer (pH 9.0). This data was developed using the same antibody clone with 84610-3-PBS in a different storage buffer formulation.



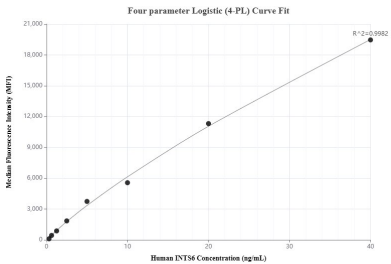
Immunohistochemical analysis of paraffin-embedded mouse liver tissue slide using 84610-3-RR (INTS6 antibody) at dilution of 1:1000 (under 40x lens). Heat mediated antigen retrieval with Tris-EDTA buffer (pH 9.0). This data was developed using the same antibody clone with 84610-3-PBS in a different storage buffer formulation.



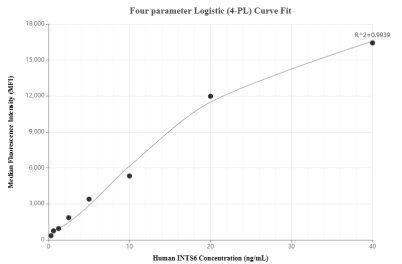
Immunofluorescent analysis of (4% PFA) fixed HeLa cells using INTS6 antibody (84610-3-RR, Clone: 242099E6) at dilution of 1:500 and Coralite@488-Conjugated Goat Anti-Rabbit IgG(H+L) (SA00013-2), CL594-Phalloidin (red). This data was developed using the same antibody clone with 84610-3-PBS in a different storage buffer formulation.



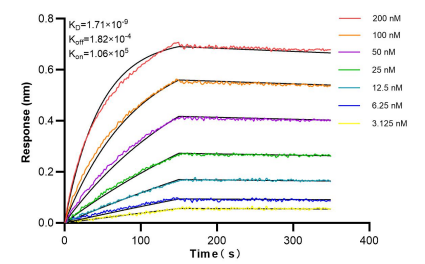
1x10<sup>6</sup> U-251 cells were intracellularly stained with 0.25 ug INTS6 Recombinant antibody (84610-3-RR, Clone:242099E6) and Coralite@488-Conjugated Goat Anti-Rabbit IgG(H+L) (SA00013-2)(red), or 0.25 ug Rabbit IgG Isotype Control RecAb (98136-1-RR, Clone: 240953C9) (blue). Cells were fixed and permeabilized with Transcription Factor Staining Buffer Kit (PF00011). This data was developed using the same antibody clone with 84610-3-PBS in a different storage buffer formulation.



Cytometric bead array standard curve of MP01446-1, INTS6 Recombinant Matched Antibody Pair, PBS Only. Capture antibody: 84610-3-PBS. Detection antibody: 84610-1-PBS. Standard: Ag36146. Range: 0.313-40 ng/mL



Cytometric bead array standard curve of MP01446-2, INTS6 Recombinant Matched Antibody Pair, PBS Only. Capture antibody: 84610-3-PBS. Detection antibody: 84610-2-PBS. Standard: Ag36146. Range: 0.313-40 ng/mL



Bi-layer interferometry (BLI) kinetic assays of 84610-3-RR against Human INTS6 were performed. The affinity constant is 1.71 nM.