

For Research Use Only

# PDP1 Recombinant antibody, PBS Only (Detector)

Catalog Number: 84612-3-PBS



## Basic Information

<b>Catalog Number:</b> 84612-3-PBS	<b>GenBank Accession Number:</b> BC047619	<b>Purification Method:</b> Protein A purification
<b>Size:</b> 100ug , Concentration: 1 mg/ml by Nanodrop;	<b>GeneID (NCBI):</b> 54704	<b>CloneNo.:</b> 242090E7
<b>Source:</b> Rabbit	<b>UNIPROT ID:</b> Q9P0J1	
<b>Isotype:</b> IgG	<b>Full Name:</b> protein phosphatase 2C, magnesium-dependent, catalytic subunit	
<b>Immunogen Catalog Number:</b> AG15453	<b>Calculated MW:</b> 537 aa, 61 kDa	
	<b>Observed MW:</b> 55-61 kDa	

## Applications

**Tested Applications:**  
WB, Cytometric bead array, Indirect ELISA

**Species Specificity:**  
human, mouse

## Product Information

84612-3-PBS targets PDP1 as part of a matched antibody pair:

MP01450-2: 84612-1-PBS capture and 84612-3-PBS detection (validated in Cytometric bead array)

Unconjugated rabbit recombinant monoclonal antibody in PBS only (BSA and azide free) storage buffer at a concentration of 1 mg/mL, ready for conjugation. Created using Proteintech's proprietary in-house recombinant technology. Recombinant production enables unrivalled batch-to-batch consistency, easy scale-up, and future security of supply.

This conjugation ready format makes antibodies ideal for use in many applications including: ELISAs, multiplex assays requiring matched pairs, mass cytometry, and multiplex imaging applications. Antibody use should be optimized by the end user for each application and assay.

## Background Information

Pyruvate dehydrogenase phosphatase 1 (PDP1), also known as PPM2C, is a key hormone-regulated metabolic enzyme that dephosphorylates and activates pyruvate dehydrogenase (PDH), thereby stimulating the conversion of pyruvate into acetyl-CoA (PMID: 36453802). PDP1 expression is regulated by FLT3-ITD in a context-dependent manner, and that it is centrally involved in the adaptation of AML glucose metabolism to the requirements of proliferation, survival and the therapeutic response to FLT3 inhibition (PMID: 37935978).

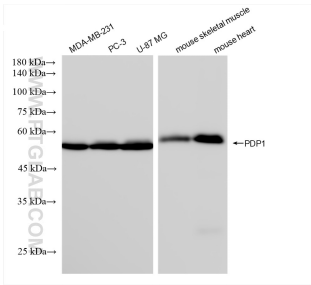
## Storage

**Storage:**  
Store at -80°C.  
**Storage Buffer:**  
PBS Only

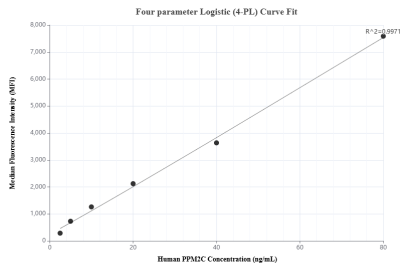
For technical support and original validation data for this product please contact:  
T: 1 (888) 4PTGLAB (1-888-478-4522) (toll free in USA), or 1(312) 455-8498 (outside USA)  
E: [proteintech@ptglab.com](mailto:proteintech@ptglab.com)  
W: [ptglab.com](http://ptglab.com)

This product is exclusively available under Proteintech Group brand and is not available to purchase from any other manufacturer.

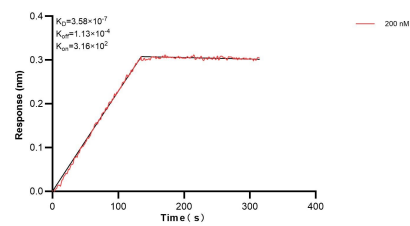
## Selected Validation Data



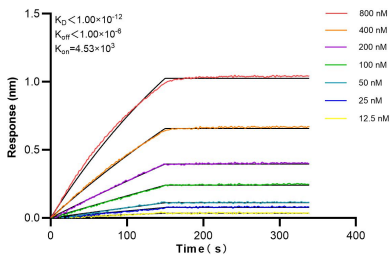
Various lysates were subjected to SDS PAGE followed by western blot with 84612-3-RR (PDP1 antibody) at dilution of 1:10000 incubated at room temperature for 1.5 hours. This data was developed using the same antibody clone with 84612-3-PBS in a different storage buffer formulation.



Cytometric bead array standard curve of MP01450-2, PPM2C Recombinant Matched Antibody Pair, PBS Only. Capture antibody: 84612-1-PBS. Detection antibody: 84612-3-PBS. Standard: Ag15453. Range: 2.5-80 ng/mL.



Biolayer interferometry (BLI) kinetic assay of 84612-3-PBS against Human PDP1 was performed. The affinity constant is 358 nM.



Biolayer interferometry (BLI) kinetic assays of 84612-3-RR against Human PDP1 were performed. The affinity constant is below 1 pM.