

For Research Use Only

# PDP1 Recombinant antibody

Catalog Number: 84612-3-RR



## Basic Information

<b>Catalog Number:</b> 84612-3-RR	<b>GenBank Accession Number:</b> BC047619	<b>Purification Method:</b> Protein A purification
<b>Size:</b> 100ul , Concentration: 1000 ug/ml by Nanodrop;	<b>GeneID (NCBI):</b> 54704	<b>CloneNo.:</b> 242090E7
<b>Source:</b> Rabbit	<b>UNIPROT ID:</b> Q9P0J1	<b>Recommended Dilutions:</b> WB 1:5000-1:50000
<b>Isotype:</b> IgG	<b>Full Name:</b> protein phosphatase 2C, magnesium-dependent, catalytic subunit	
<b>Immunogen Catalog Number:</b> AG15453	<b>Calculated MW:</b> 537 aa, 61 kDa	
	<b>Observed MW:</b> 55-61 kDa	

## Applications

<b>Tested Applications:</b> WB, ELISA	<b>Positive Controls:</b>
<b>Species Specificity:</b> human, mouse	<b>WB :</b> MDA-MB-231 cells, PC-3 cells, U-87 MG cells, mouse skeletal muscle tissue, mouse heart tissue

## Background Information

Pyruvate dehydrogenase phosphatase 1 (PDP1), also known as PPM2C, is a key hormone-regulated metabolic enzyme that dephosphorylates and activates pyruvate dehydrogenase (PDH), thereby stimulating the conversion of pyruvate into acetyl-CoA (PMID: 36453802). PDP1 expression is regulated by FLT3-ITD in a context-dependent manner, and that it is centrally involved in the adaptation of AML glucose metabolism to the requirements of proliferation, survival and the therapeutic response to FLT3 inhibition (PMID: 37935978).

## Storage

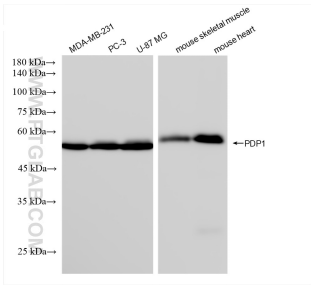
**Storage:**  
Store at -20°C. Stable for one year after shipment.  
**Storage Buffer:**  
PBS with 0.02% sodium azide and 50% glycerol pH 7.3.  
**Aliquoting is unnecessary for -20°C storage**

\*\*\* 20ul sizes contain 0.1% BSA

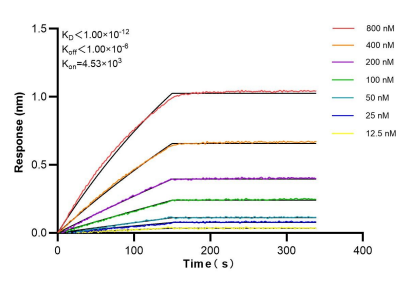
For technical support and original validation data for this product please contact:  
T: 1 (888) 4PTGLAB (1-888-478-4522) (toll free in USA), or 1(312) 455-8498 (outside USA)  
E: [proteintech@ptglab.com](mailto:proteintech@ptglab.com)  
W: [ptglab.com](http://ptglab.com)

This product is exclusively available under Proteintech Group brand and is not available to purchase from any other manufacturer.

## Selected Validation Data



Various lysates were subjected to SDS PAGE followed by western blot with 84612-3-RR (PDP1 antibody) at dilution of 1:10000 incubated at room temperature for 1.5 hours.



Biolayer interferometry (BLI) kinetic assays of 84612-3-RR against Human PDP1 were performed. The affinity constant is below 1 pM.