

For Research Use Only

PSMA/GCPII Recombinant antibody, PBS Only (Capture)

Catalog Number: 84615-2-PBS



Basic Information

Catalog Number: 84615-2-PBS	GenBank Accession Number: NM_004476.3	Purification Method: Protein A purification
Size: 100ug , Concentration: 1 mg/ml by Nanodrop;	GeneID (NCBI): 2346	CloneNo.: 242026F4
Source: Rabbit	UNIPROT ID: Q04609	
Isotype: IgG	Full Name: folate hydrolase (prostate-specific membrane antigen) 1	
	Calculated MW: 84KD	

Applications

Tested Applications:
IF/ICC, Cytometric bead array, Sandwich ELISA, Indirect ELISA, Sample test

Species Specificity:
human

Product Information

84615-2-PBS targets PSMA/GCPII as part of a matched antibody pair:

MP01454-1: 84615-2-PBS capture and 84615-1-PBS detection (validated in Cytometric bead array, Sandwich ELISA)

Unconjugated rabbit recombinant monoclonal antibody in PBS only (BSA and azide free) storage buffer at a concentration of 1 mg/mL, ready for conjugation. Created using Proteintech's proprietary in-house recombinant technology. Recombinant production enables unrivalled batch-to-batch consistency, easy scale-up, and future security of supply.

This conjugation ready format makes antibodies ideal for use in many applications including: ELISAs, multiplex assays requiring matched pairs, mass cytometry, and multiplex imaging applications. Antibody use should be optimized by the end user for each application and assay.

Storage

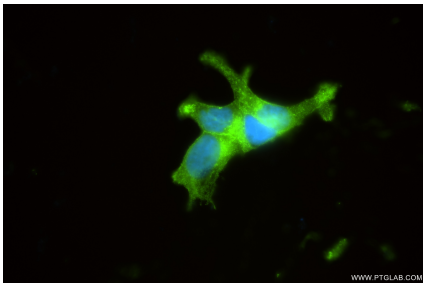
Storage:
Store at -80°C.

Storage Buffer:
PBS Only

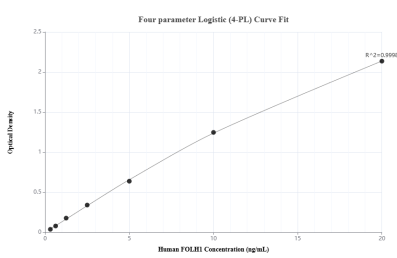
For technical support and original validation data for this product please contact:
T: 1 (888) 4PTGLAB (1-888-478-4522) (toll free in USA), or 1(312) 455-8498 (outside USA)
E: proteintech@ptglab.com
W: ptglab.com

This product is exclusively available under Proteintech Group brand and is not available to purchase from any other manufacturer.

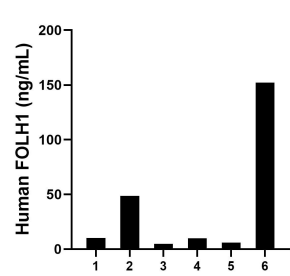
Selected Validation Data



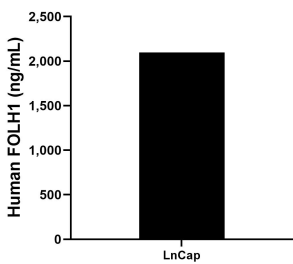
Immunofluorescent analysis of (4% PFA) fixed LNCaP cells using FOLH1 antibody (84615-2-RR, Clone: 242026F4) at dilution of 1:250 and CoraLite®488-Conjugated Goat Anti-Rabbit IgG(H+L) (SA00013-2). This data was developed using the same antibody clone with 84615-2-PBS in a different storage buffer formulation.



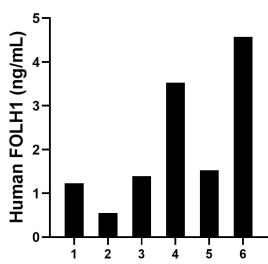
Sandwich ELISA standard curve of MP01454-1, Human FOLH1 Recombinant Matched Antibody Pair - PBS only. 84615-2-PBS was coated to a plate as the capture antibody and incubated with serial dilutions of standard Eg0216. 84615-1-PBS was HRP conjugated as the detection antibody. Range: 0.313-20 ng/mL



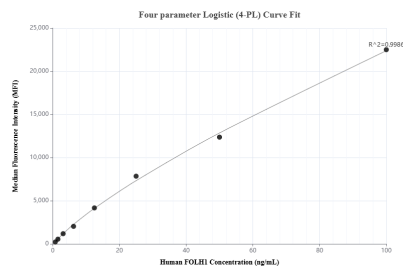
Serum of six individual healthy human donors was measured. The human FOLH1 concentration of detected samples was determined to be 38.61 ng/mL with a range of 4.93 - 152.25 ng/mL.



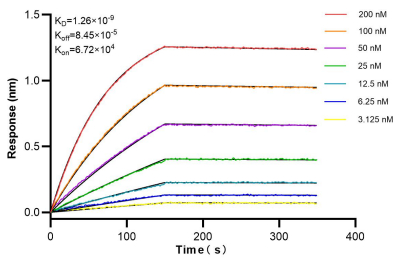
The mean FOLH1 concentration was determined to be 2,098.65 ng/mL in LnCap cell extract based on a 2.0 mg/mL extract load.



Saliva of six individual healthy human donors was measured. The human FOLH1 concentration of detected samples was determined to be 2.13 ng/mL with a range of 0.55 - 4.58 ng/mL



Cytometric bead array standard curve of MP01454-1, FOLH1 Recombinant Matched Antibody Pair, PBS Only. Capture antibody: 84615-2-PBS. Detection antibody: 84615-1-PBS. Standard: Eg0216. Range: 0.781-100 ng/mL



Biolayer interferometry (BLI) kinetic assays of 84615-2-RR against Human PSMA/GCPII were performed. The affinity constant is 1.26 nM.