

For Research Use Only

# PSMA/GCPII Recombinant antibody

Catalog Number: 84615-2-RR



## Basic Information

Catalog Number:

84615-2-RR

Size:

100ul, Concentration: 1000 µg/ml by Nanodrop;

Source:

Rabbit

Isotype:

IgG

GenBank Accession Number:

NM\_004476.3

GeneID (NCBI):

2346

UNIPROT ID:

Q04609

Full Name:

folate hydrolase (prostate-specific membrane antigen) 1

Calculated MW:

84KD

Purification Method:

Protein A purification

CloneNo.:

242026F4

Recommended Dilutions:

IF/ICC 1:125-1:500

## Applications

Tested Applications:

IF/ICC, ELISA

Species Specificity:

human

Positive Controls:

IF/ICC : LNCaP cells,

## Storage

Storage:

Store at -20°C. Stable for one year after shipment.

Storage Buffer:

PBS with 0.02% sodium azide and 50% glycerol pH 7.3.

Aliquoting is unnecessary for -20°C storage

\*\*\* 20ul sizes contain 0.1% BSA

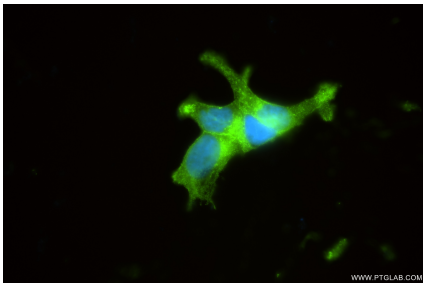
For technical support and original validation data for this product please contact:

T: 1 (888) 4PTGLAB (1-888-478-4522) (toll free in USA), or 1(312) 455-8498 (outside USA)

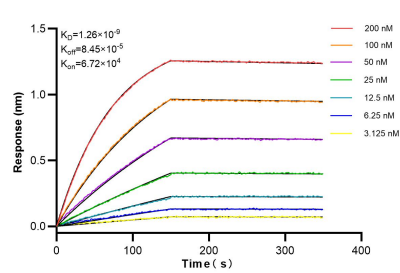
E: [proteintech@ptglab.com](mailto:proteintech@ptglab.com)  
W: [ptglab.com](http://ptglab.com)

This product is exclusively available under Proteintech Group brand and is not available to purchase from any other manufacturer.

Selected Validation Data



Immunofluorescent analysis of (4% PFA) fixed LNCaP cells using FOLH1 antibody (84615-2-RR, Clone: 242026F4 ) at dilution of 1:250 and CoraLite®488-Conjugated Goat Anti-Rabbit IgG(H+L) (SA00013-2).



Biolayer interferometry (BLI) kinetic assays of 84615-2-RR against Human PSMA/GCPII were performed. The affinity constant is 1.26 nM.