

For Research Use Only

# Fibrinogen gamma chain Recombinant antibody

Catalog Number: 84616-4-RR



## Basic Information

<b>Catalog Number:</b> 84616-4-RR	<b>GenBank Accession Number:</b> NM_133862.2	<b>Purification Method:</b> Protein A purification
<b>Size:</b> 100ul , Concentration: 1000 µg/ml by Nanodrop;	<b>GeneID (NCBI):</b> 99571	<b>CloneNo.:</b> 241958B3
<b>Source:</b> Rabbit	<b>UNIPROT ID:</b> Q8VCM7	<b>Recommended Dilutions:</b> WB 1:5000-1:50000
<b>Isotype:</b> IgG	<b>Full Name:</b> fibrinogen gamma chain	
	<b>Calculated MW:</b> 49kDa	
	<b>Observed MW:</b> 50 kDa	

## Applications

<b>Tested Applications:</b> WB, ELISA	<b>Positive Controls:</b> WB : mouse spleen tissue, mouse liver tissue
<b>Species Specificity:</b> mouse	

## Background Information

Fibrinogen gamma chain, also known as Fgg. It is an isomeric hexamer, which is linked by disulfide bonds. It contains two groups of three different chains ( $\alpha$ ,  $\beta$  and  $\gamma$ ). The two heterotrimers are head-to-head conformation, and the N-terminal is in a small central domain (by similarity). It is polymerized with fibrinogen  $\alpha$ (FGA) and fibrinogen  $\beta$ (FGB) to form insoluble fibrin matrix. In addition, it plays a role in stabilizing injury in the early stage of wound repair and guiding cell migration in the process of epithelial re-formation. The molecular weight of Fgg is 50 kDa.

## Storage

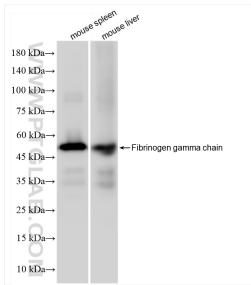
**Storage:**  
Store at -20°C. Stable for one year after shipment.  
**Storage Buffer:**  
PBS with 0.02% sodium azide and 50% glycerol pH 7.3.  
Aliquoting is unnecessary for -20°C storage

\*\*\* 20ul sizes contain 0.1% BSA

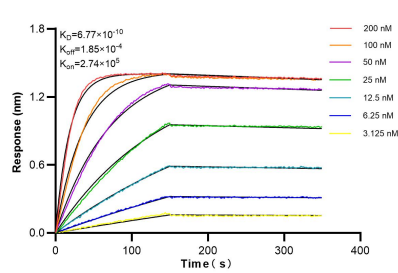
For technical support and original validation data for this product please contact:  
T: 1 (888) 4PTGLAB (1-888-478-4522) (toll free in USA), or 1(312) 455-8498 (outside USA)  
E: [proteintech@ptglab.com](mailto:proteintech@ptglab.com)  
W: [ptglab.com](http://ptglab.com)

This product is exclusively available under Proteintech Group brand and is not available to purchase from any other manufacturer.

## Selected Validation Data



Various lysates were subjected to SDS PAGE followed by western blot with 84616-4-RR (Fibrinogen gamma chain antibody) at dilution of 1:10000 incubated at room temperature for 1.5 hours.



Biolayer interferometry (BLI) kinetic assays of 84616-4-RR against Mouse Fibrinogen gamma chain were performed. The affinity constant is 0.677 nM.