

For Research Use Only

Mouse TLR3 Recombinant antibody, PBS Only (Detector)

Catalog Number: 84618-2-PBS



Basic Information

Catalog Number: 84618-2-PBS	GenBank Accession Number: NM_126166.4	Purification Method: Protein A purification
Size: 100ug , Concentration: 1 mg/ml by Nanodrop;	GeneID (NCBI): 142980	CloneNo.: 241792B4
Source: Rabbit	UNIPROT ID: Q99MB1	
Isotype: IgG	Full Name: toll-like receptor 3	
	Calculated MW: 104kDa	

Applications

Tested Applications:
Cytometric bead array, Sandwich ELISA, Indirect ELISA, Sample test

Species Specificity:
mouse

Product Information

84618-2-PBS targets TLR3 as part of a matched antibody pair:

MP01424-1: 84618-1-PBS capture and 84618-2-PBS detection (validated in Cytometric bead array, Sandwich ELISA)

Unconjugated rabbit recombinant monoclonal antibody in PBS only (BSA and azide free) storage buffer at a concentration of 1 mg/mL, ready for conjugation. Created using Proteintech's proprietary in-house recombinant technology. Recombinant production enables unrivalled batch-to-batch consistency, easy scale-up, and future security of supply.

This conjugation ready format makes antibodies ideal for use in many applications including: ELISAs, multiplex assays requiring matched pairs, mass cytometry, and multiplex imaging applications. Antibody use should be optimized by the end user for each application and assay.

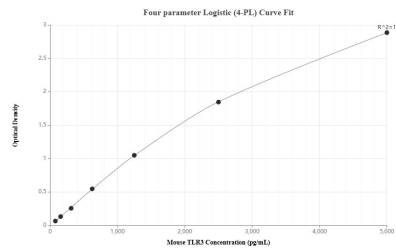
Storage

Storage:
Store at -80°C.
Storage Buffer:
PBS Only

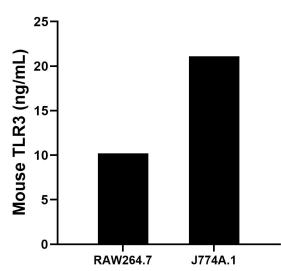
For technical support and original validation data for this product please contact:
T: 1 (888) 4PTGLAB (1-888-478-4522) (toll free in USA), or 1(312) 455-8498 (outside USA)
E: proteintech@ptglab.com
W: ptglab.com

This product is exclusively available under Proteintech Group brand and is not available to purchase from any other manufacturer.

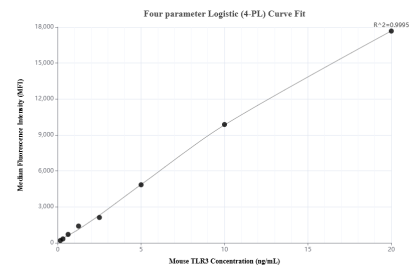
Selected Validation Data



Sandwich ELISA standard curve of MP01424-1, Mouse TLR3 Recombinant Matched Antibody Pair - PBS only. 84618-1-PBS was coated to a plate as the capture antibody and incubated with serial dilutions of standard Eg1803. 84618-2-PBS was HRP conjugated as the detection antibody. Range: 78.1-5000 pg/mL



The mean TLR3 concentration was determined to be 10.21 ng/mL in RAW264.7 cell extract based on a 1.3 mg/mL extract load and 21.10 ng/mL in J774A.1 cell extract based on a 2.4 mg/mL extract load.



Cytometric bead array standard curve of MP01424-1, MOUSE TLR3 Recombinant Matched Antibody Pair, PBS Only. Capture antibody: 84618-1-PBS. Detection antibody: 84618-2-PBS. Standard: Eg1803. Range: 0.156-20 ng/mL