

For Research Use Only

# SETD5 Recombinant antibody, PBS Only (Detector)

Catalog Number: 84622-1-PBS



## Basic Information

<b>Catalog Number:</b> 84622-1-PBS	<b>GenBank Accession Number:</b> BC020956	<b>Purification Method:</b> Protein A purification
<b>Size:</b> 100ug , Concentration: 1 mg/ml by Nanodrop;	<b>GeneID (NCBI):</b> 55209	<b>CloneNo.:</b> 241903A3
<b>Source:</b> Rabbit	<b>UNIPROT ID:</b> Q9COA6	
<b>Isotype:</b> IgG	<b>Full Name:</b> SET domain containing 5	
<b>Immunogen Catalog Number:</b> AG28929		

## Applications

**Tested Applications:**  
IF/ICC, Cytometric bead array, Indirect ELISA

**Species Specificity:**  
human

## Product Information

84622-1-PBS targets SETD5 as part of a matched antibody pair:

MP01432-1: 84622-2-PBS capture and 84622-1-PBS detection (validated in Cytometric bead array)

Unconjugated rabbit recombinant monoclonal antibody in PBS only (BSA and azide free) storage buffer at a concentration of 1 mg/mL, ready for conjugation. Created using Proteintech's proprietary in-house recombinant technology. Recombinant production enables unrivalled batch-to-batch consistency, easy scale-up, and future security of supply.

This conjugation ready format makes antibodies ideal for use in many applications including: ELISAs, multiplex assays requiring matched pairs, mass cytometry, and multiplex imaging applications. Antibody use should be optimized by the end user for each application and assay.

## Background Information

SETD5, also known as KIAA1757, is a member of the histone lysine methyltransferase family. It has 3 isoforms and is involved in a variety of cellular functions, including cell cycle regulation and cell proliferation, and has a potential role in early embryonic development (PMID: 36875494).

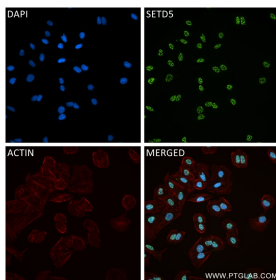
## Storage

**Storage:**  
Store at -80°C.  
**Storage Buffer:**  
PBS Only

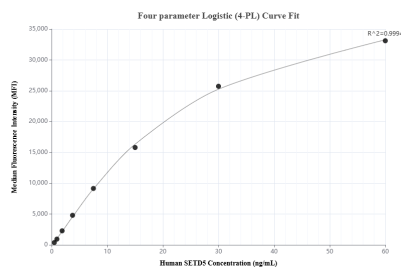
For technical support and original validation data for this product please contact:  
T: 1 (888) 4PTGLAB (1-888-478-4522) (toll free in USA), or 1(312) 455-8498 (outside USA)  
E: [proteintech@ptglab.com](mailto:proteintech@ptglab.com)  
W: [ptglab.com](http://ptglab.com)

This product is exclusively available under Proteintech Group brand and is not available to purchase from any other manufacturer.

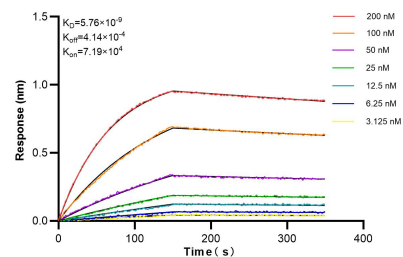
## Selected Validation Data



Immunofluorescent analysis of (4% PFA) fixed U2OS cells using SETD5 antibody (84622-1-RR, Clone: 241903A3) at dilution of 1:400 and CoraLite®488-Conjugated Goat Anti-Rabbit IgG(H+L) (SA00013-2), CL594-Phalloidin (red). This data was developed using the same antibody clone with 84622-1-PBS in a different storage buffer formulation.



Cytometric bead array standard curve of MP01432-1, SETD5 Recombinant Matched Antibody Pair, PBS Only. Capture antibody: 84622-2-PBS. Detection antibody: 84622-1-PBS. Standard: Ag28929. Range: 0.469-60 ng/mL.



Biolayer interferometry (BLI) kinetic assays of 84622-1-RR against Human SETD5 were performed. The affinity constant is 5.76 nM.