

For Research Use Only

# SETD5 Recombinant antibody, PBS Only

Catalog Number: 84622-4-PBS



## Basic Information

Catalog Number:

84622-4-PBS

Size:

100ug, Concentration: 1 mg/ml by Nanodrop;

Source:

Rabbit

Isotype:

IgG

Immunogen Catalog Number:

AG28929

GenBank Accession Number:

BC020956

GeneID (NCBI):

55209

UNIPROT ID:

Q9C0A6

Full Name:

SET domain containing 5

Observed MW:

160-220 kDa

Purification Method:

Protein A purification

CloneNo.:

241903D4

## Applications

Tested Applications:

WB, Indirect ELISA

Species Specificity:

human

## Background Information

SETD5, also known as KIAA1757, is a member of the histone lysine methyltransferase family. It has 3 isoforms and is involved in a variety of cellular functions, including cell cycle regulation and cell proliferation, and has a potential role in early embryonic development (PMID: 36875494).

## Storage

Storage:

Store at -80°C.

Storage Buffer:

PBS Only

For technical support and original validation data for this product please contact:

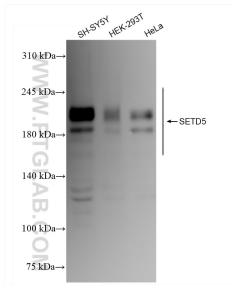
T: 1 (888) 4PTGLAB (1-888-478-4522) (toll free in USA), or 1(312) 455-8498 (outside USA)

E: [proteintech@ptglab.com](mailto:proteintech@ptglab.com)

W: [ptglab.com](http://ptglab.com)

This product is exclusively available under Proteintech Group brand and is not available to purchase from any other manufacturer.

## Selected Validation Data



Various lysates were subjected to SDS PAGE followed by western blot with 84622-4-RR (SETD5 antibody) at dilution of 1:1000 incubated at room temperature for 1.5 hours. This data was developed using the same antibody clone with 84622-4-PBS in a different storage buffer formulation.