

For Research Use Only

# Syntaxin 6 Recombinant antibody

Catalog Number: 84627-5-RR



## Basic Information

<b>Catalog Number:</b> 84627-5-RR	<b>GenBank Accession Number:</b> BC009944	<b>Purification Method:</b> Protein A purification
<b>Size:</b> 100ul , Concentration: 1000 µg/ml by Nanodrop;	<b>GeneID (NCBI):</b> 10228	<b>CloneNo.:</b> 242100A9
<b>Source:</b> Rabbit	<b>UNIPROT ID:</b> O43752	<b>Recommended Dilutions:</b> WB 1:2000-1:10000 IP 0.5-4.0 ug for 1.0-3.0 mg of total protein lysate IHC 1:200-1:800 IF/ICC 1:250-1:1000
<b>Isotype:</b> IgG	<b>Full Name:</b> syntaxin 6	
<b>Immunogen Catalog Number:</b> AG1284	<b>Calculated MW:</b> 29 kDa	
	<b>Observed MW:</b> 32 kDa	

## Applications

**Tested Applications:**  
WB, IHC, IF/ICC, IP, ELISA

**Species Specificity:**  
human, mouse, rat

**Note-IHC: suggested antigen retrieval with TE buffer pH 9.0; (\*) Alternatively, antigen retrieval may be performed with citrate buffer pH 6.0**

**Positive Controls:**

**WB :** A549 cells, PC-12 cells, Neuro-2a cells, fetal human brain tissue, mouse brain tissue, rat brain tissue

**IP :** mouse brain tissue,

**IHC :** mouse brain tissue,

**IF/ICC :** PC-12 cells,

## Background Information

Syntaxin-6 (STX6) is a SNARE protein located in the trans-Golgi network (TGN) and endosomes. It associates with a variety of SNARE proteins and is involved in intracellular vesicle trafficking. STX6 is required for sorting proteins from endosomes toward either the TGN or lysosomes.

## Storage

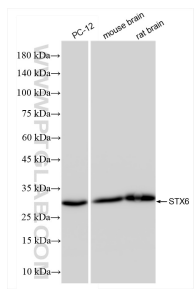
**Storage:**  
Store at -20°C. Stable for one year after shipment.  
**Storage Buffer:**  
PBS with 0.02% sodium azide and 50% glycerol pH 7.3.  
**Aliquoting is unnecessary for -20°C storage**

\*\*\* 20ul sizes contain 0.1% BSA

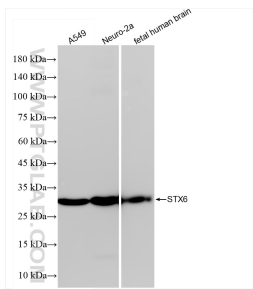
For technical support and original validation data for this product please contact:  
T: 1 (888) 4PTGLAB (1-888-478-4522) (toll free in USA), or 1(312) 455-8498 (outside USA)  
E: proteintech@ptglab.com  
W: ptglab.com

This product is exclusively available under Proteintech Group brand and is not available to purchase from any other manufacturer.

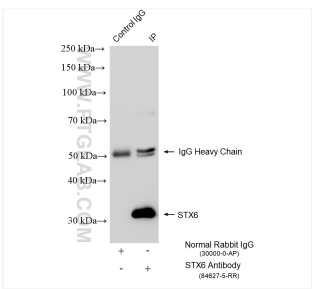
Selected Validation Data



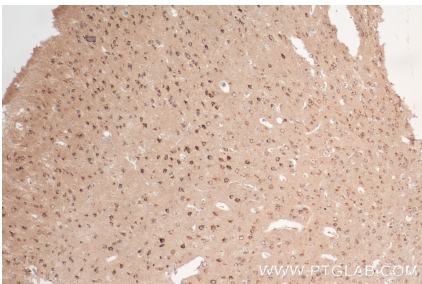
Various lysates were subjected to SDS PAGE followed by western blot with 84627-5-RR (Syntxin 6 antibody) at dilution of 1:5000 incubated at room temperature for 1.5 hours.



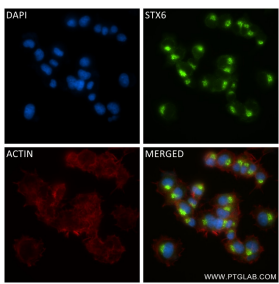
Various lysates were subjected to SDS PAGE followed by western blot with 84627-5-RR (Syntxin 6 antibody) at dilution of 1:5000 incubated at room temperature for 1.5 hours.



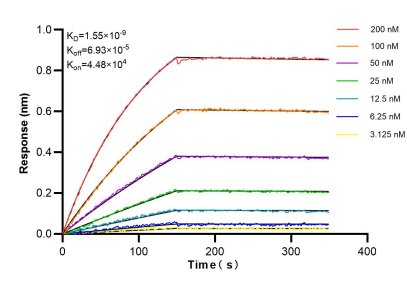
IP result of anti-Syntxin 6 (IP:84627-5-RR, 4ug; Detection:84627-5-RR 1:1500) with mouse brain tissue lysate 1840 ug.



Immunohistochemical analysis of paraffin-embedded mouse brain tissue slide using 84627-5-RR (Syntxin 6 antibody) at dilution of 1:400 (under 10x lens). Heat mediated antigen retrieval with Tris-EDTA buffer (pH 9.0).



Immunofluorescent analysis of (4% PFA) fixed PC-12 cells using Syntxin 6 antibody (84627-5-RR, Clone: 242100A9 ) at dilution of 1:500 and Coralite® 488-Conjugated Goat Anti-Rabbit IgG(H+L) (SA00013-2), CL594-Phalloidin (red).



Bilayer interferometry (BLI) kinetic assays of 84627-5-RR against Human Syntxin 6 were performed. The affinity constant is 1.55 nM.