

For Research Use Only

ASXL1 Recombinant antibody

Catalog Number: 84630-1-RR



Basic Information

Catalog Number: 84630-1-RR	GenBank Accession Number: BC064984	Purification Method: Protein A purification
Size: 100ul , Concentration: 1000 ug/ml by Nanodrop;	GeneID (NCBI): 171023	CloneNo.: 241563A5
Source: Rabbit	UNIPROT ID: Q8IXJ9	Recommended Dilutions: WB 1:5000-1:50000
Isotype: IgG	Full Name: additional sex combs like 1 (Drosophila)	
Immunogen Catalog Number: AG10290	Calculated MW: 84aa,10 kDa; 1541aa,165 kDa	
	Observed MW: 200-220 kDa	

Applications

Tested Applications: WB, ELISA	Positive Controls:
Species Specificity: human	WB : HeLa cells, K-562 cells, MCF-7 cells, HL-60 cells, COLO 320 cells

Background Information

Additional sex combs-like 1 (ASXL1) is a member of the ASXL family, which is involved in epigenetic regulation. It is one of the mammalian Asx homologs. Mutations in the ASXL1 gene are frequently found in myeloid neoplasms, breast cancers, and prostate cancers (PMID: 30013160; PMID: 22436456; PMID: 26470845). In patients with myeloid malignancies, ASXL1 mutations are mostly heterozygous frameshift or nonsense mutations that result in C-terminal truncation (PMID: 30982744; PMID: 26095772; PMID: 32683582; PMID: 29643185).

Storage

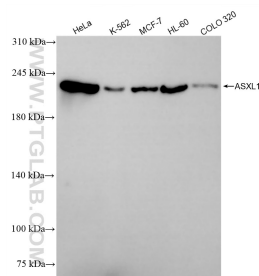
Storage:
Store at -20°C. Stable for one year after shipment.
Storage Buffer:
PBS with 0.02% sodium azide and 50% glycerol, pH7.3
Aliquoting is unnecessary for -20°C storage

*** 20ul sizes contain 0.1% BSA

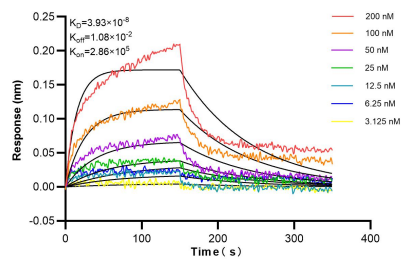
For technical support and original validation data for this product please contact:
T: 1 (888) 4PTGLAB (1-888-478-4522) (toll free in USA), or 1(312) 455-8498 (outside USA)
E: proteintech@ptglab.com
W: ptglab.com

This product is exclusively available under Proteintech Group brand and is not available to purchase from any other manufacturer.

Selected Validation Data



Various lysates were subjected to SDS PAGE followed by western blot with 84630-1-RR (ASXL1 antibody) at dilution of 1:10000 incubated at room temperature for 1.5 hours.



Biolayer interferometry (BLI) kinetic assays of 84630-1-RR against Human ASXL1 were performed. The affinity constant is 39.3 nM.