

For Research Use Only

# LIPM Recombinant antibody, PBS Only

Catalog Number: 84638-1-PBS



## Basic Information

### Catalog Number:

84638-1-PBS

### Size:

100ug, Concentration: 1 mg/ml by Nanodrop;

### Source:

Rabbit

### Isotype:

IgG

### GenBank Accession Number:

BC157888

### GeneID (NCBI):

340654

### UNIPROT ID:

Q5VYY2

### Full Name:

Lipase, family member M

### Calculated MW:

48 kDa

### Purification Method:

Protein A purification

### CloneNo.:

241355C6

## Applications

### Tested Applications:

IHC, Indirect ELISA

### Species Specificity:

human, mouse

## Background Information

LIPM, also named as LIPL3, belongs to the AB hydrolase superfamily and Lipase family. LIPM plays a highly specific role in the last step of keratinocyte differentiation. LIPM may have an essential function in lipid metabolism of the most differentiated epidermal layers.

## Storage

### Storage:

Store at -80°C.

### Storage Buffer:

PBS Only

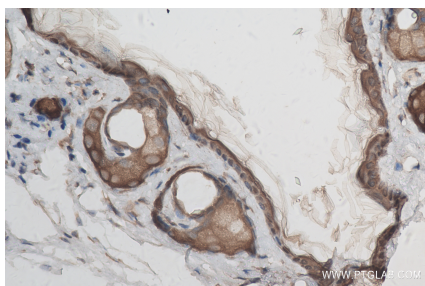
For technical support and original validation data for this product please contact:

T: 1 (888) 4PTGLAB (1-888-478-4522) (toll free in USA), or 1(312) 455-8498 (outside USA)

E: [proteintech@ptglab.com](mailto:proteintech@ptglab.com)  
W: [ptglab.com](http://ptglab.com)

This product is exclusively available under Proteintech Group brand and is not available to purchase from any other manufacturer.

## Selected Validation Data



Immunohistochemical analysis of paraffin-embedded mouse skin tissue slide using 84638-1-RR (LIPM antibody) at dilution of 1:500 (under 40x lens). Heat mediated antigen retrieval with Tris-EDTA buffer (pH 9.0). This data was developed using the same antibody clone with 84638-1-PBS in a different storage buffer formulation.