

For Research Use Only

# Mouse CXCL2 Recombinant antibody, PBS Only (Detector)

Catalog Number: 84645-4-PBS



## Basic Information

|   |   |   |
|---|---|---|
| <b>Catalog Number:</b><br>84645-4-PBS                         | <b>GenBank Accession Number:</b><br>NM_009140         | <b>Purification Method:</b><br>Protein A purification |
| <b>Size:</b><br>100ug, Concentration: 1 mg/ml by<br>Nanodrop; | <b>GeneID (NCBI):</b><br>20310                        | <b>CloneNo.:</b><br>242007H8                          |
| <b>Source:</b><br>Rabbit                                      | <b>UNIPROT ID:</b><br>P10889                          |   |
| <b>Isotype:</b><br>IgG  | <b>Full Name:</b><br>chemokine (C-X-C motif) ligand 2 |   |
| <b>Immunogen Catalog Number:</b><br>EG2239                    | <b>Calculated MW:</b><br>11 kDa                       |   |

## Applications

**Tested Applications:**  
Cytometric bead array, Sandwich ELISA, Indirect ELISA,  
Sample test

**Species Specificity:**  
mouse

## Product Information

84645-4-PBS targets CXCL2 as part of a matched antibody pair:

MP01474-1: 84645-3-PBS capture and 84645-4-PBS detection (validated in Cytometric bead array, Sandwich ELISA)

Unconjugated rabbit recombinant monoclonal antibody in PBS only (BSA and azide free) storage buffer at a concentration of 1 mg/mL, ready for conjugation. Created using Proteintech's proprietary in-house recombinant technology. Recombinant production enables unrivalled batch-to-batch consistency, easy scale-up, and future security of supply.

This conjugation ready format makes antibodies ideal for use in many applications including: ELISAs, multiplex assays requiring matched pairs, mass cytometry, and multiplex imaging applications. Antibody use should be optimized by the end user for each application and assay.

## Storage

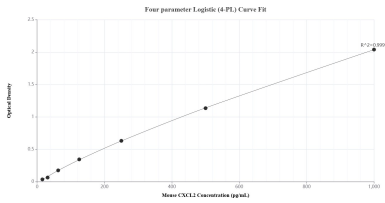
**Storage:**  
Store at -80°C.

**Storage Buffer:**  
PBS only, pH7.3

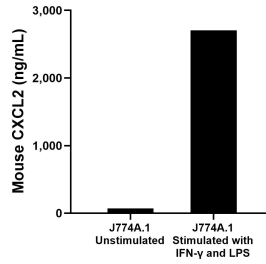
For technical support and original validation data for this product please contact:  
T: 1 (888) 4PTGLAB (1-888-478-4522) (toll free in USA), or 1(312) 455-8498 (outside USA)      E: proteintech@ptglab.com  
W: ptglab.com

This product is exclusively available under Proteintech Group brand and is not available to purchase from any other manufacturer.

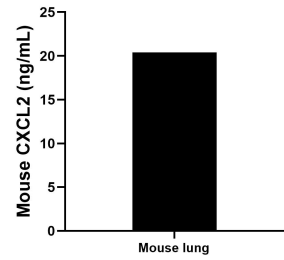
## Selected Validation Data



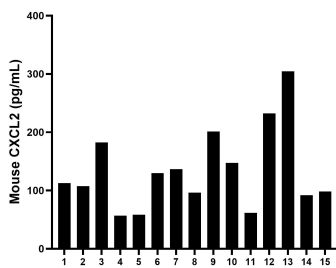
Sandwich ELISA standard curve of MP01474-1, Mouse CXCL2 Recombinant Matched Antibody Pair - PBS only. 84645-3-PBS was coated to a plate as the capture antibody and incubated with serial dilutions of standard Eg2239. 84645-4-PBS was HRP conjugated as the detection antibody. Range: 15.6-1000 pg/mL



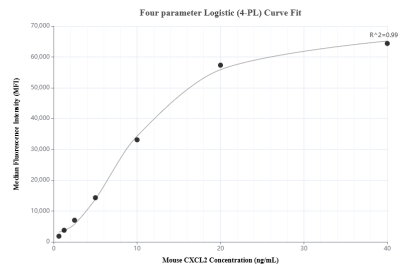
J774A.1 cells were cultured unstimulated or stimulated with 20 ng/mL IFN- $\gamma$  and 1  $\mu$ g/mL LPS for 1 day. The mean CXCL2 concentration was determined to be 71.93 ng/mL in unstimulated supernatant, 2,704.98 ng/mL in stimulated supernatant.



Mouse lung were rinsed with enough PBS to cover the organs and kept on ice. Tissue was homogenized with a tissue homogenizer and cultured in RPMI 1640 supplemented with 10% fetal bovine serum, 2 mM L-glutamine, 100 U/mL penicillin, and 100 mg/mL streptomycin sulfate for 3 days. Aliquots of the cell culture supernates were removed and assayed for mouse CXCL2, and measured 20.41 ng/mL



Serum of fifteen individual healthy human donors was measured. The CXCL2 concentration of detected samples was determined to be 134.5 pg/mL with a range of 57.0-304.7 pg/mL



Cytometric bead array standard curve of MP01474-1, MOUSE CXCL2 Recombinant Matched Antibody Pair, PBS Only. Capture antibody: 84645-3-PBS. Detection antibody: 84645-4-PBS. Standard: Eg2239. Range: 0.625-40 ng/mL